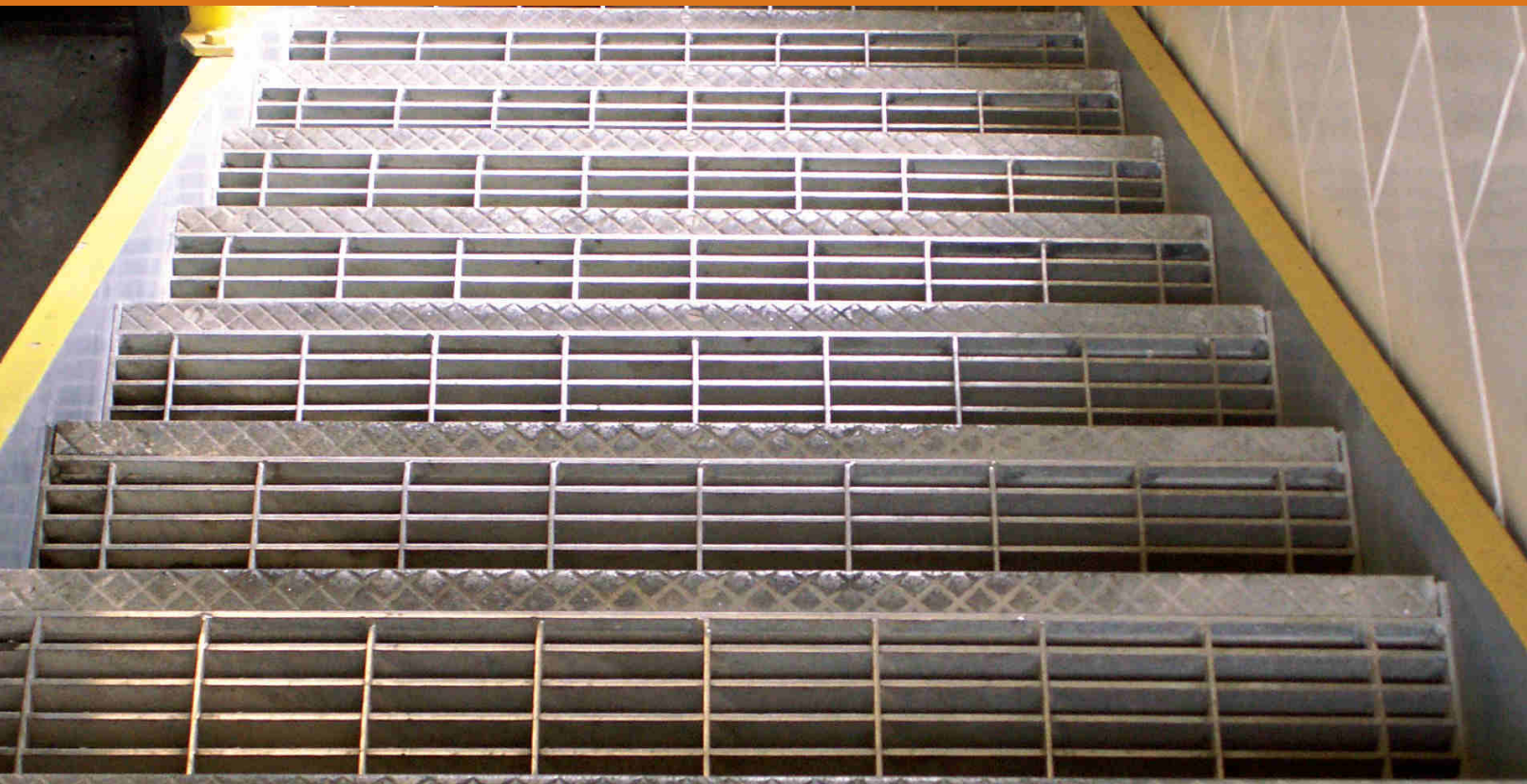


STAIR TREADS

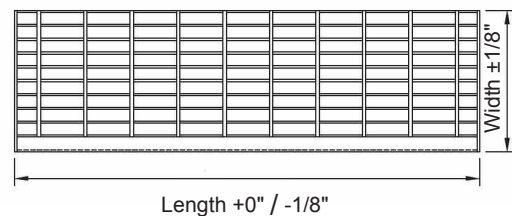


STAIR TREADS

Most grating platform and walkway applications require stair treads to access the various levels that are inherent in most project applications. We offer a full range of aluminum, carbon and stainless steel grating tread profiles to meet the various demands in the marketplace. Whether the project requires a standard maintenance access tread or a closer mesh and more pedestrian friendly (ADA) product, Grating Systems can offer a variety of competitive and cost effective products.

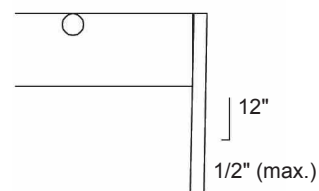
Our sales team and engineering support group can help with product specifications regarding OnGrip® Spray Traction Surface as well as selecting the appropriate nosing for the tread to meet the needs of the client. Nosing options are shown on pages 33 and 34 for both steel and aluminum products along with tread details of each of the material types including the slip resistant options. Stair treads are available with equal end dimensions for cross bar alignment.

STAIR TREAD TOLERANCES



Overall Dimensional Tolerances

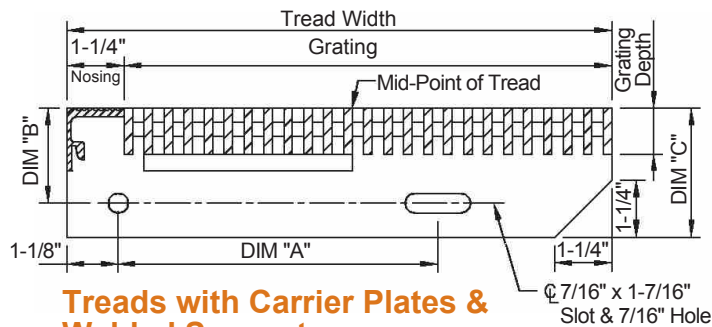
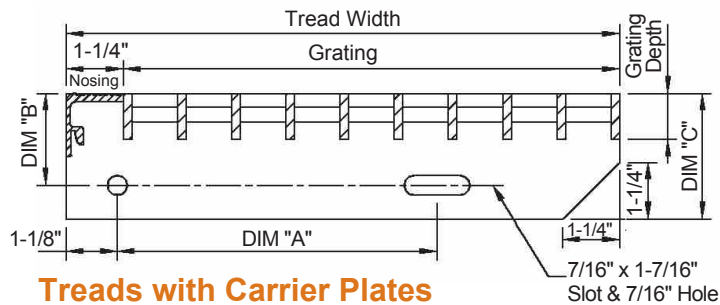
Note: Length of Tread is distance between outer faces of Carrier Plates.



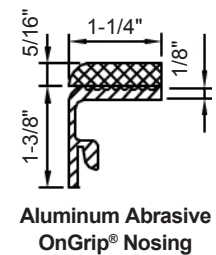
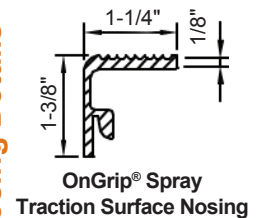
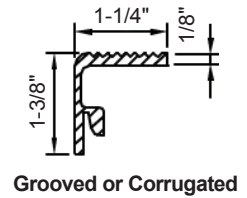
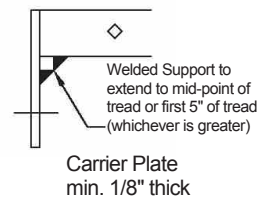
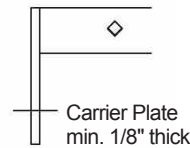
Carrier Plate Lean

STAIR TREADS

ALUMINUM STAIR TREAD DETAILS

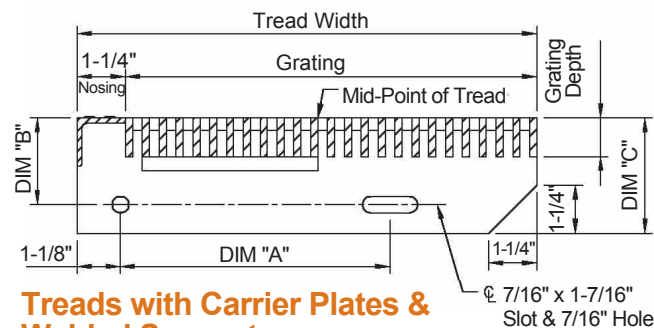
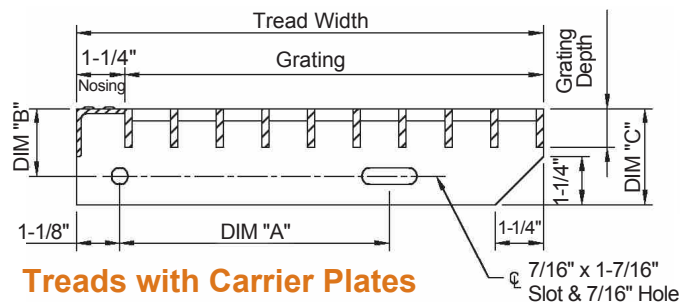


For Close Mesh Grating, 7 & 11 spaced grating. 8 Spacing (1/2" c.c.) available upon request. Please call for details.

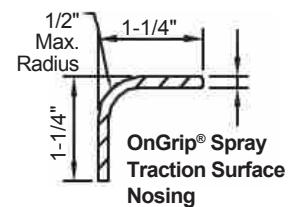
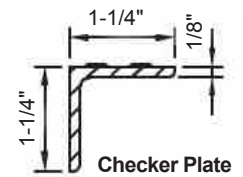
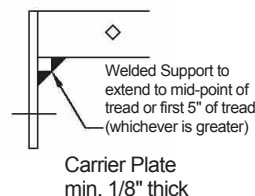
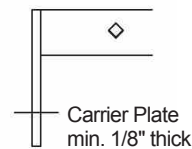


Nosing Details

STEEL STAIR TREAD DETAILS



For Close Mesh Grating, 7 & 11 spaced grating. 8 Spacing (1/2" c.c.) available upon request. Please call for details.



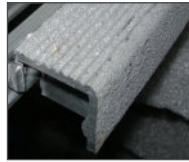
Nosing Details

STAIR TREADS

ALUMINUM STAIR TREAD



◀ **Grooved Nosing**
Standard on
Aluminum Treads



◀ **OnGrip® Spray**
Traction Surface
Nosing is also
available



◀ **Aluminum Abrasive**
OnGrip® Nosing
also available on
aluminum treads

Standard Tread Widths¹

# of bearing bars	Width (includes nosing)					DIM "A"
	SG, SDF, ADT Series	SGI Series	SGLi Series	AR Series	Plank Series	
5	6-3/16"	6-1/4"	6-3/16"	6-11/16"	6-3/8"	2-1/2"
6	7-3/8"	7-7/16"	7-3/8"	8"	7-1/4"	4-1/2"
7	8-9/16"	8-5/8"	8-9/16"	9-5/16"	8-3/4"	4-1/2"
8	9-3/4"	9-13/16"	9-3/4"	10-5/8"	9-15/16"	7"
9	10-15/16"	11"	10-15/16"	11-15/16"	11-1/8"	7"
10	12-1/8"	12-3/16"	12-1/8"	13-1/4"	12-3/8"	7"

Carrier Plate Dimensions

Grating Depth	DIM "B"	DIM "C"
1"	2-1/4"	3"
1-1/4"	2-1/4"	3"
1-1/2"	2-1/4"	3"
1-3/4"	2-1/4"	3"
2"	3-1/4"	4"
2-1/4"	3-1/4"	4"
2-1/2"	3-1/4"	4"

Max Plank Tread Length²

Grating Depth	Plank ³ Grating
1"	30
1-1/4"	36
1-1/2"	44
1-3/4"	53
2"	63
2-1/4"	66
2-1/2"	70

Maximum Tread Length² (in.)

Bar Size, Inches	SG, SGF, ADT Series Plain Surface				SG, SGF, ADT Series Serrated Surface				SGI Series Striated Surface				SGLi Series Striated Surface			
	19 1-3/16" c.c.	15 15/16" c.c.	11 11/16" c.c.	7 7/16" c.c.	19 1-3/16" c.c.	15 15/16" c.c.	11 11/16" c.c.	7 7/16" c.c.	19 1-3/16" c.c.	15 15/16" c.c.	11 11/16" c.c.	7 7/16" c.c.	19 1-3/16" c.c.	15 15/16" c.c.	11 11/16" c.c.	7 7/16" c.c.
1 x 1/8	24	27	28	32	21	24	26	28								
1 x 3/16	28	30	32	36	26	27	28	32					24	28	29	34
1 x 1/4	31	33			27	29			28	30	32	36				
1-1/4 x 1/8	30	32	34	40	28	30	31	36								
1-1/4 x 3/16	34	37	40	47	31	33	36	41					31	34	36	43
1-1/4 x 1/4	38	41			34	37			34	37	40	47				
1-1/2 x 1/8	36	39	42	50	33	36	38	45								
1-1/2 x 3/16	42	46	50	59	38	42	45	53					37	40	43	53
1-1/2 x 1/4	47	52			43	47			42	46	50	59				
1-3/4 x 3/16	51	56	61	66	46	51	55	66								
1-3/4 x 1/4	58	64			52	58			51	56	61	66				
2 x 3/16	61	66	66	68	56	61	66	66					52	57	62	66
2 x 1/4	66	66			63	66			61	66	66	68				
2-1/4 x 3/16	66	66	66	80	66	66	66	74								
2-1/4 x 1/4	66	69			66	66			66	66	66	80				
2-1/2 x 3/16	66	70	77	94	66	66	71	87					66	66	66	82
2-1/2 x 1/4	73	81			67	75			66	70	77	94				

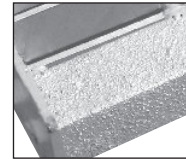
Additional configurations available upon inquiry. 1. Table of widths based on 3/16" thick bearing bars (1/4" I-Bar) and standard 1-3/16" c.c. bar spacing (1-1/8" face-to-face) for riveted grating. 2. Maximum tread length based on 300# concentrated load on front 5" of tread at center of tread length and max. D=1/240 of length. Design treads exceeding 66" length for 300# concentrated loads at 1/3 points. Note: Riveted grating treads available upon inquiry. See page 23 for description of Grating Series. 3. Plank Grating is standard Heavy Duty.

STAIR TREADS

STEEL STAIR TREAD



◀ **Checkerplate Nosing is Standard on Steel treads**



◀ **OnGrip® Spray Traction Surface Nosing is available**

Maximum Tread Length² (in.)

Bar Size, Inches	W, SGCS, SGSS, DT Series Plain Surface				W, SGCS, SGSS, DT Series Serrated Surface			
	19 1-3/16" c.c.	15 15/16" c.c.	11 11/16" c.c.	7 7/16" c.c.	19 1-3/16" c.c.	15 15/16" c.c.	11 11/16" c.c.	7 7/16" c.c.
1 x 1/8	31	36	41	51	27	30	34	45
1 x 3/16	41	48	51	59	34	40	45	51
1 x 1/4	49	53			42	46		
1-1/4 x 1/8	43	50	56	66	37	43	49	58
1-1/4 x 3/16	56	61	66	66	50	54	58	66
1-1/4 x 1/4	63	66			56	60		
1-1/2 x 1/8	56	65	66	66	49	58	63	66
1-1/2 x 3/16	66	66	66	76	63	66	66	68
1-1/2 x 1/4	66	67			66	66		
1-3/4 x 3/16	66	72	78	95	66	66	71	85
1-3/4 x 1/4	74	82			67	74		
2 x 3/16	78	87	95	115	72	79	86	105
2 x 1/4	89	99			82	91		
2-1/4 x 3/16	92	103	112	136	85	95	103	125
2-1/4 x 1/4	106	118			97	108		
2-1/2 x 3/16	107	119	130	159	100	111	121	148
2-1/2 x 1/4	123	137			114	127		



◀ **Aluminum Abrasive OnGrip® Nosing is Available on Steel Treads**

Carrier Plate Dimensions

Grating Depth	DIM "B"	DIM "C"
1"	1-3/4"	2-1/2"
1-1/4"	1-3/4"	2-1/2"
1-1/2"	2-1/4"	3"
1-3/4"	2-1/4"	3"
2"	3-1/4"	4"
2-1/4"	3-1/4"	4"
2-1/2"	3-1/4"	4"

Standard Tread Widths¹

# of bearing bars	Width (includes nosing)		DIM "A"
	W, SGCS, SGSS, DT Series	R Series	
5	6-3/16"	6-11/16"	2-1/2"
6	7-3/8"	8"	4-1/2"
7	8-9/16"	9-5/16"	4-1/2"
8	9-3/4"	10-5/8"	7"
9	10-15/16"	11-15/16"	7"
10	12-1/8"	13-1/4"	7"

Additional configurations available upon inquiry. 1. Table of widths based on 3/16" thick bearing bars (1/4" I-Bar) and standard 1-3/16" c.c. bar spacing (1-1/8" face-to-face for riveted grating. 2. Maximum tread length based on 300# concentrated load on front 5" of tread at center of tread length and max. D=1/240 of length. Design treads exceeding 66" length for 300# concentrated loads at 1/3 points. **Note:** Riveted grating treads available upon inquiry.