

ANTI-SLIP SAFETY STAIR AND WALKWAY PRODUCTS

800-368-4243 | sales@gratingsystems.com
3005 S. Scott Ln. | West Haven, UT 84401

WWW.GRATINGSYSTEMS.COM
Building "Grate" Relationships Since 1984

**New
Construction**

Pages 3 – 13

**Existing
Buildings**

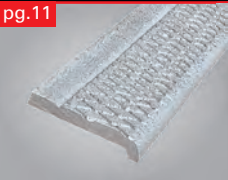
Pages 15 – 19

pg. 9



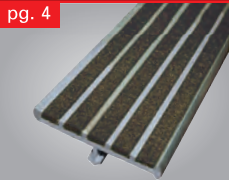
NITEGLOW®

pg. 11



ALUMOGRIT®

pg. 4



SUPERGRIT®

pg. 7

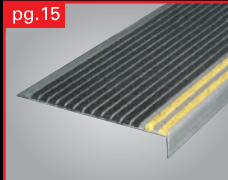


SPECTRA®



**MAKE EVERY STEP
A SAFE ONE!**

pg. 15



STAIRMASTER®

pg. 17



FLEX-TRED®

CATALOG 95

PROUDLY MADE IN THE





INDEX

Brand Names & Specs

Supergrit®	3-5
Spectra®	6-7
NITEGLOW®	8-9
Alumogrit®	10-12
Ferrogrit®	10-12
Thresholds	13
Stairmaster®	15-16
Flexmaster®	16
Flex-Tred®	17-18
Safe-Stride®	19
Epoxy WP-70	19
Safe-Stride® Paint	19
Walk-A-Sured Water Clear Epoxy®	19
Walk-A-Sured®	19
Epoxy WP-70®	19

Available Fasteners

Installation Details

Installation Tips

Protective Tape

Platforms, Floor Plates

Existing Buildings

Specifications

Cast	10
Flexmaster®	16
Spectra®	6
Supergrit®	3

Stair Treads, Nosings

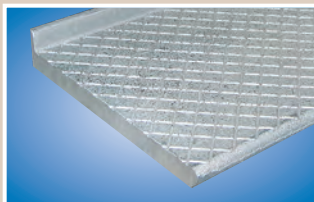
Cast	11
For OSHA Barrier-free	4-9
Spectra®	6-7
Supergrit®	3-5

Structural Treads

Cast	12
------	----

Thresholds

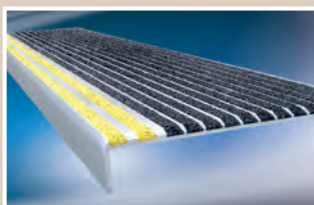
Curb Bar



INDEX BY TYPE NUMBER

ABRASIVE CAST

Type	Page
100	11
101	11
101-SP	11
102	11
103	11
104	12
105	12
105-A	12
106	12
106-A	12
107	12
107-A	12
109	13
110T	13
111	13
112	13
113	13
114	13
115	13
115-M	13
115-S	13
116	11
116-A	11
117	12
117-A	12
119	13
120	11
150	11
250	11
950	11



EXTRUDED ALUMINUM

Type	Page
132	4
M231BF-NG .9	5
WP-1A	5
WP-2	4
WP-2JT	4
WP-2C	15
WP-2D-NG .9	15
221-BF-NG .9	4
231-BF	4
232	4
238	5
241-BF	4
242	4
300	16
311	16
333FT	15
333FT-NG .9	9
365	16
431	5
500, 500SN	15
500NG	9
511, 511SN	15
540	15
570	15
610	5
630	15
630A	5
630B	5
660	15
6100	15
WP-RN2SG .5	5
WP-RN3SG .5	5
WP-RN2SP .6	6
WP-RN3SP .6	6
WP-RN2-NG .9	9
WP-RN3SG-NG .9	9
WP-RN3SP-NG .9	9
121BF	4
121	4
122	4
131	4

ANTI-SLIP SAFETY STAIR and WALKWAY PRODUCTS

Why specify Safety Stair and Walkway Products?

- **'Anti-Slip' Safety Treads** and **Safety Surfaces** provide code compliant protection for safe egress.
- The use of **Safety Stair** and **Walkway Products** can help protect the Building Owner, and pedestrians with the latest available technology for making stairs and walkways safe.

Why specify 'Wooster'?

- A **'Wooster'** specification means the finest in **quality**, dependability and service.
- We are Safety Stair and Walkway experts! Wooster Products Inc has been furnishing **"state-of-the-art"** anti-slip Safety Treads and Safety Surfaces continuously since 1921!
- The most **competent production team** and **friendly sales and support staff** in the industry.

WAREHOUSE STOCK

- A Wooster Products Advantage
- Significant Warehouse Stock!
- Most orders ship in 1-2 days
- Please check with customer service on specific nosings and current inventory levels.



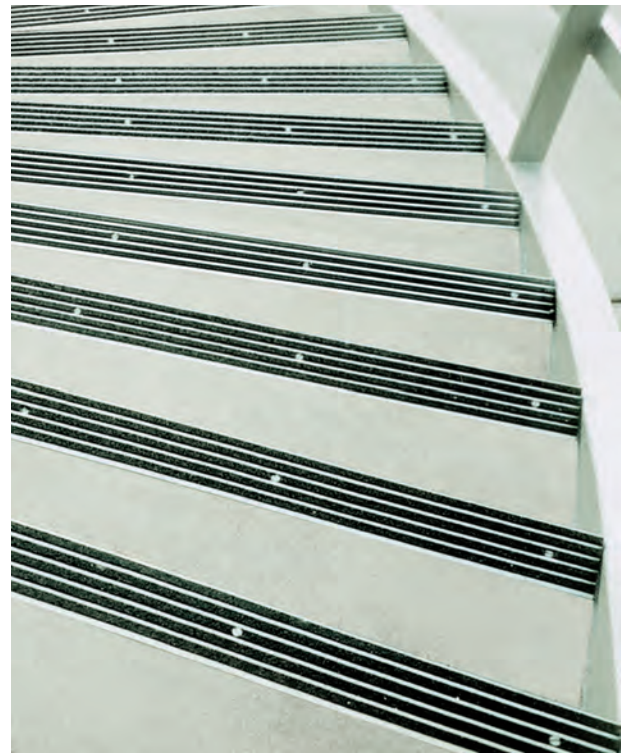
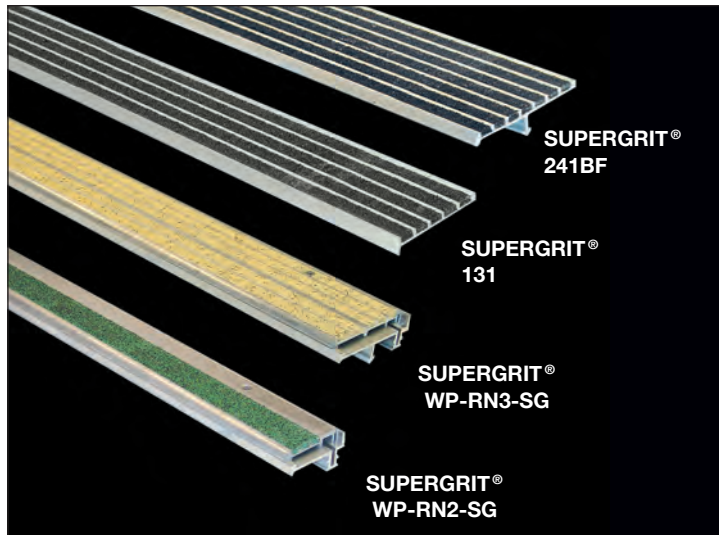


SUPERGRIT® Safety Treads

Specify Supergrit® For:

- Heavy Pedestrian Traffic
- Indoor, Outdoor Installation
- Excellent Safety Protection at Low Cost

- New Construction or Existing Stairs
- Non-combustible



SUPERGRIT® TYPE 131

Supergrit® Treads Provide...

A heat-treated, corrosion resistant, extruded aluminum base with satin/lacquered finish. The use of diamond-hard aluminum oxide in the filler assures long tread life under heavy pedestrian traffic. Supergrit® is designed for both inside and outside use.

Supergrit® Features:

- Extruded aluminum base – abrasive filler
- Lengths to order, up to 12' 0" (3.66 m) in one piece
- Lengths over maximum to be made in equal sections
- Non-combustible
- High content of aluminum oxide abrasive
- 11 standard colors
- Colors extend throughout filler
- Protective tape available at extra cost

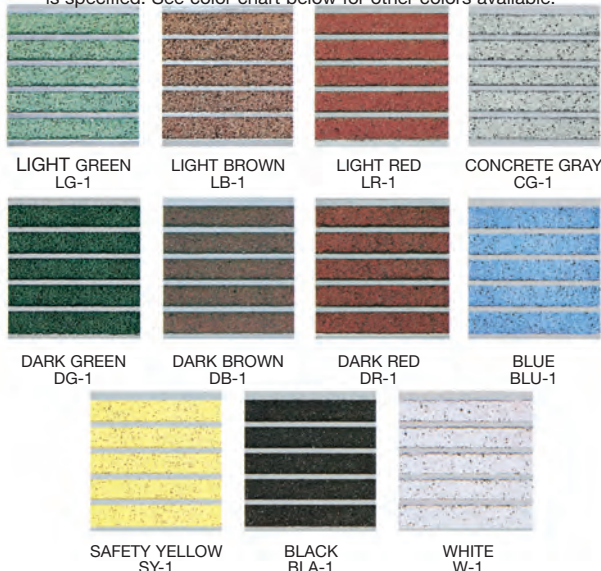


SAFETY TREADS IN COLORS

Time-proven Supergrit® safety treads are available in colors for improved aesthetics.

SUPERGRIT®/STAIRMASTER® COLORS

Standard color is black. Black will be shipped unless another color is specified. See color chart below for other colors available.



**Actual tread color may vary slightly from printed sheet.
Request tread sample if color is critical.**

SUPERGRIT® SPECIFICATION:

Provide Supergrit® type _____ safety nosings as manufactured by Wooster Products Inc. for interior and exterior stairs.

- Nosing base to be type 6063-T5 extruded aluminum.
- Anti-slip filler shall contain approximately 65% virgin grain Aluminum Oxide (AL_2O_3) abrasive.
- Nosings shall be non-combustible as tested under Federal Test Method Standard No. 501a, Method 6411.
- Type of anchor shall be as specified. See page 14 for anchor details.
- Nosings shall terminate not more than 4" (101.6 mm) from ends of steps for poured concrete stairs; for concrete-filled steel pan stairs, nosings shall be full length of steps less 1/8" (3.05 mm) clearance.
- Color shall extend uniformly throughout the filler; black color will be furnished if no other color is specified.
- Protective tape available upon request, at an extra cost.
- Protective tape should be removed as soon as possible once installed.

Note: Safety nosings going into new poured concrete or cement fill shall be installed before "INITIAL SET" of the concrete or cement occurs.

Nosings shall finish flush with the top of the traffic surface.



SUPERGRIT®
Safety Treads

Specify Supergrit® For:

- Heavy Pedestrian Traffic
- Indoor, Outdoor Installation

- New Construction or Existing Stairs
- Non-combustible

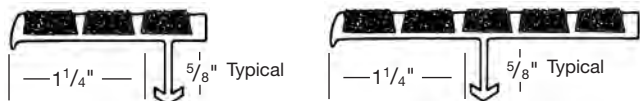
Please call Wooster Products Inc for current availability.

SUPERGRIT® PROFILES FOR NEW CONCRETE STAIRS AND FOR STEEL PAN

MAXIMUM PIECE LENGTH IS 12 FEET

THE DUAL PURPOSE STAIR NOSING BY 'WOOSTER'

STEEL PAN: Concrete filled, installed stringer to stringer less 1/8" clearance.



TYPE 121BF

1 7/8" (47.6 mm) wide
1/4" (6.35 mm) thick



TYPE 241BF

4" (101.6 mm) wide, 1/4" (6.35 mm) thick

TYPE 231BF

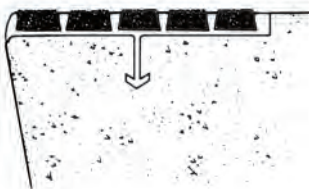
3" (76.2 mm) wide, 1/4" (6.35 mm) thick

**121BF, 231BF AND
241BF AVAILABLE
FROM STOCK**

DETAIL

Sure-hold anchor in concrete step.

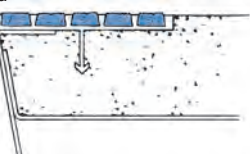
Designed to install so that there is no projection past the face of the riser.



DETAIL

Sure-hold anchor in sloped riser steel pan step.

NOTE: Nose design provides better fit at formed edge of steel pan.



THESE SECTIONS AVAILABLE WITH COUNTERSUNK HOLES AND FASTENERS



TYPE 121

1 7/8" (47.63 mm) wide, 1/4" (6.35 mm) thick
nose 1/4" (6.35 mm) underside



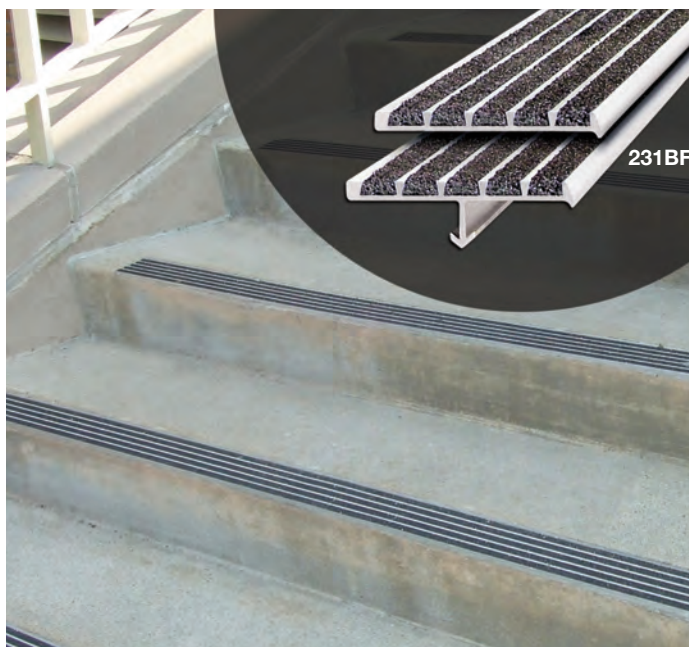
TYPE 131

3" (76.2 mm) wide, 1/4" (6.35 mm) thick
nose 1/4" (6.35 mm) underside



TYPE 141

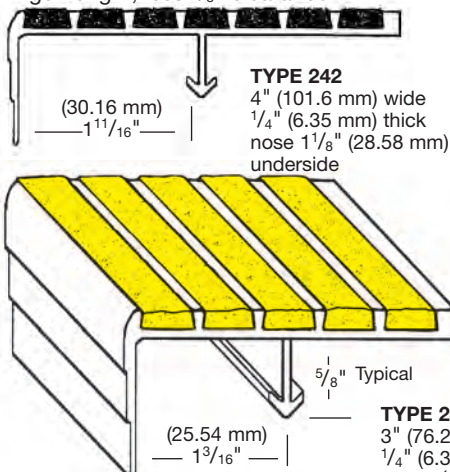
4" (101.6 mm) wide, 1/4" (6.35 mm) thick
nose 1/4" (6.35 mm) underside



SUPERGRIT® PROFILES FOR STEEL PAN CONCRETE-FILLED STAIRS

MAXIMUM PIECE LENGTH IS 12 FEET

Full stringer length, less 1/8" clearance.

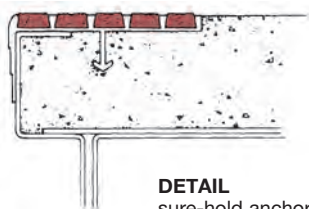


TYPE 242

4" (101.6 mm) wide
1/4" (6.35 mm) thick
nose 1 1/8" (28.58 mm) underside

TYPE 232

3" (76.2 mm) wide
1/4" (6.35 mm) thick
nose 1 1/8" (28.58 mm) underside



DETAIL

sure-hold anchor in steel pan step

**SECTIONS NOT
TO SCALE**

THESE SECTIONS AVAILABLE WITH COUNTERSUNK HOLES AND FASTENERS



TYPE 122

1 7/8" (47.63 mm) wide
1/4" (6.35 mm) thick
nose 1 1/8" (28.58 mm) underside



TYPE 132

3" (76.2 mm) wide
1/4" (6.35 mm) thick
nose 1 1/8" (28.58 mm) underside



TYPE 142

4" (101.6 mm) wide
1/4" (6.35 mm) thick
nose 1 1/8" (28.58 mm) underside

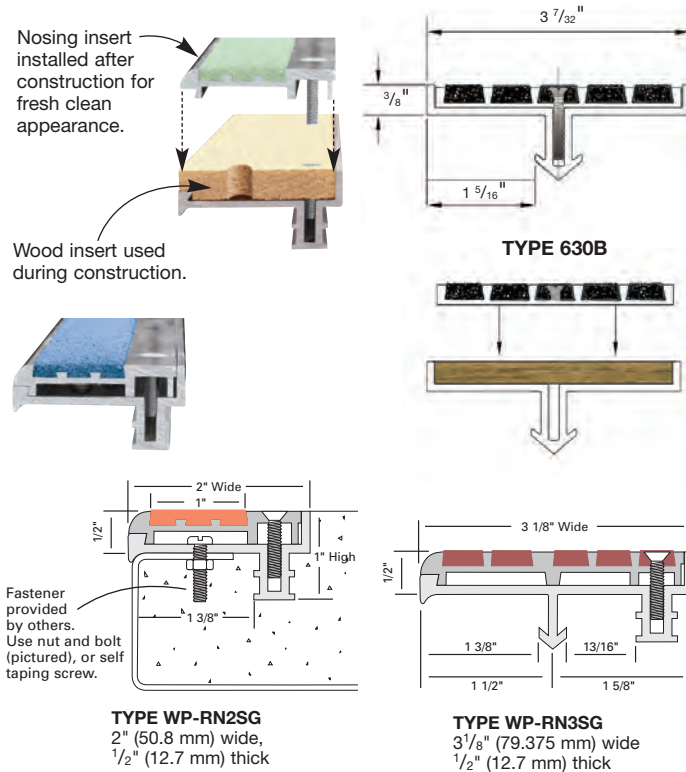
NEW CONSTRUCTION

SUPERGRIT® 2-STAGE STAIR NOSING FOR STEEL PAN OR POURED CONCRETE STEPS

MAXIMUM PIECE LENGTH IS 8 FEET

Specify SUPERGRIT® Replaceable Stair Nosings For:

- Fast easy replacement if damaged
- Visual appearance and durability
- Secure anchorage
- Indoor or outdoor use
- Matching or contrasting color decor
- Non combustible
- Heavy pedestrian traffic
- Premium quality construction with no clatter and an architecturally clean design.
- Nosings can be furnished with disposable wood insert for use during construction phase. After construction nosing inserts are installed for fresh, clean appearance.
- Furnished with SUPERGRIT® Filler in a wide range of colors.
- Steel pan or poured concrete steps.



NAVSEA LADDER TREADS

Sizes 4" – 6" – 9" • MIL-T-24634 (SH)
 Custom Lengths • Full Treads • Cap Treads

TYPE I FULL TREAD

4" - Model 841
 6" - Model 861
 9" - Model 891

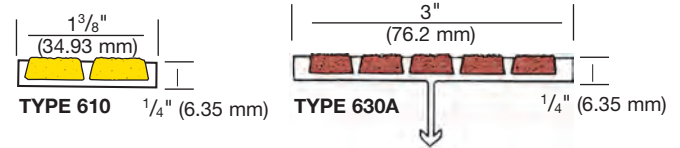
TYPE II CAP TREAD

4" - Model 842
 6" - Model 862
 9" - Model 892



FOR POURED CONCRETE OR STEEL PAN STAIRS

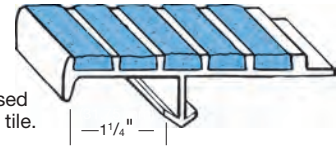
MAXIMUM PIECE LENGTH IS 12 FEET



HAS RECESS FOR TILE

TYPE 431

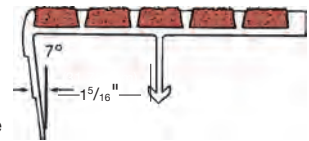
3 1/2" wide (88.9 mm),
 1/4" (6.35 mm) thick,
 1/4" (6.35 mm) nose underside
 Specially designed with recessed back to receive 1/8" (3.05 mm) tile.



FOR USE WITH SLOPED RISERS

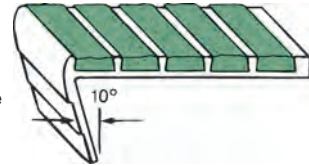
TYPE 238

3" (76.2 mm) wide
 1/4" (6.35 mm) thick
 1 1/8" (28.58 mm) nose underside



TYPE 138

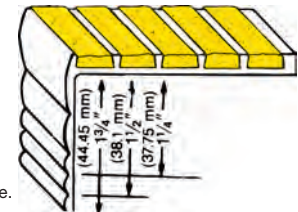
3" (76.2 mm) wide
 1/4" (6.35 mm) thick
 1 1/8" (28.58 mm) nose underside
 Specially designed for steel pan stairs with sloped risers



HAS VARIABLE NOSE DEPTH

TYPE 133

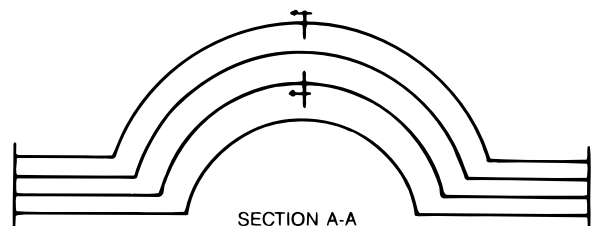
3" (76.2 mm) wide
 1/4" (6.35 mm) thick
 1 3/4" (44.45 mm) nose underside



Nose can be sheared for additional charge.

SUPERGRIT® CURVED & MITERED TREADS

FOR RADIUS APPLICATIONS – CONSULT FACTORY



The tread provides non-slip protection as well as protection for the edge of the stair, preventing chipping and wear. Treads are shipped ready for installation.

- Lengths as required to 10' 0" (3.048 m)
- Curves and miters to drawings or template
- Minimum radius 3' 0" (914.4 mm)
- Guaranteed uniformity of width and thickness insures easy backing with floor tile
- Lead times increase for curved treads
- Only the following SUPERGRIT® treads are curved; types 121, 121BF, 131, 141, 231BF, 241BF, 630, 630A, 610



Specify Spectra® For:

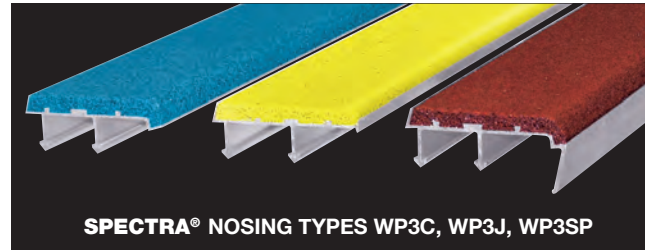
- Best Architectural Aesthetics
- Matching or Contrasting Color Decor
- Indoor or Outdoor Use
- Heavy Pedestrian Traffic
- Non-combustible



SPECTRA® NOSING TYPE WP3C

SAFETY TREADS IN CONTRASTING COLORS

Designed to enhance the safety and beauty of every architectural installation.



SPECTRA® NOSING TYPES WP3C, WP3J, WP3SP

SPECTRA® SPECIFICATION:

Provide Spectra® type _____ safety nosings as manufactured by Wooster Products Inc for interior and exterior stairs.

- Nosing base to be type 6063-T5 extruded aluminum.
- Anti-slip abrasive shall contain approximately 60% virgin grain Aluminum Oxide (AL₂O₃) abrasive.
- Binder is to be a fully-cured resilient type epoxy; epoxy binder to filler ratio to be 13% minimum for improved cleanability.
- Epoxy/Abrasive filler shall be securely bonded to the extruded aluminum base.
- Type of anchor shall be as specified. See page 14 for anchor details.
- Nosings shall terminate not more than 4" (101.6 mm) from ends of steps for poured concrete stairs; for concrete-filled steel pan stairs, nosings shall be full length of steps less 1/8" (3.05 mm) clearance.
- Color shall extend uniformly throughout the filler; black color will be furnished if no other color is specified.
- Protective tape available upon request at additional cost.
- Protective tape should be removed as soon as possible once installed.

SPECTRA® TREADS PROVIDE...

A high content of aluminum oxide abrasive grit for long life and lasting beauty. Spectra®'s safety surface has easy maintenance features and insures excellent protection from liability of falls and injuries.

SPECTRA® FEATURES:

- Extruded aluminum base – abrasive filler
- Lengths to order, up to 10'0" (3.048 m) in one piece
- Lengths over maximum to be made in equal sections
- Anti-slip abrasive extending over radius of nose
- High content of aluminum oxide abrasive
- 18 standard colors
- "Clean" architectural lines
- Protective tape available at extra cost
- Non-combustible

MEETS A.D.A. REQUIREMENTS

Note: Safety nosings going into new poured concrete or cement fill shall be installed before "INITIAL SET" of the concrete or cement occurs.

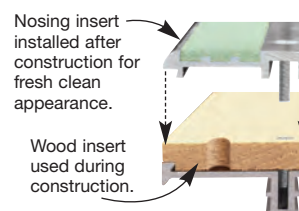
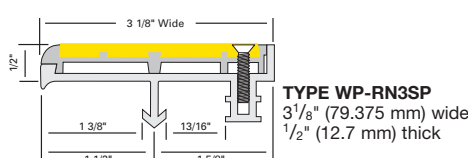
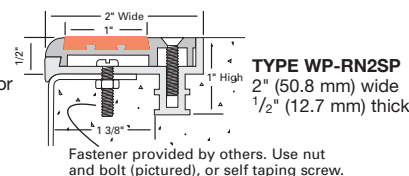
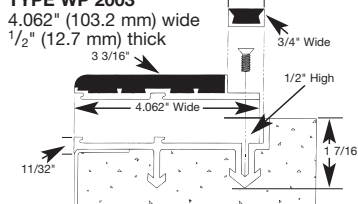
Nosings shall finish flush with the top of the traffic surface.

SPECTRA® TWO STAGE STAIR NOSING WITH REPLACABLE WOOD INSERT FOR PROTECTION DURING CONSTRUCTION
MAXIMUM PIECE LENGTH IS 8 FEET

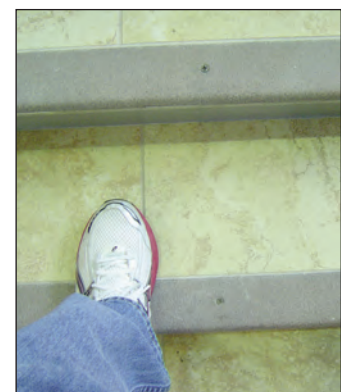
- Premium quality construction with no clatter for an architecturally clean design.
- Designed for installation on steel pan stairs or poured concrete steps.
- Nosings can be furnished with disposable wood insert for use during construction phase. After construction anti-slip inserts are installed for a fresh, clean appearance.
- Furnished with Spectra filler in a wide range of colors.
- Nosings can be replaced if damaged, without costly demolition of stairs.
- For steel pan or formed concrete steps.
- Spectra® features Non-combustible per Federal Test 501a

- Fast easy replacement
- Visual appearance and durability
- Secure anchorage
- Indoor or outdoor use
- Matching or contrasting color decor
- Non combustible
- Heavy pedestrian traffic

TYPE WP 2003



Wood insert used during construction.



Specify Spectra® For:

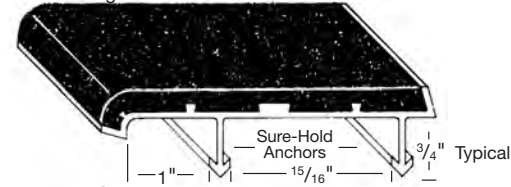
- Best Architectural Aesthetics
- Matching or Contrasting Color Decor
- Indoor or Outdoor Use
- Heavy Pedestrian Traffic
- Non-combustible

Please call Wooster Products Inc for current availability.

SPECTRA® PROFILES FOR NEW CONCRETE STAIRS

MAXIMUM PIECE LENGTH IS 10 FEET

Custom lengths to $\pm 1/16"$.

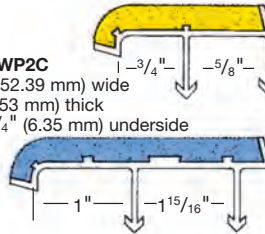


TYPE WP3C
3 1/16" (77.79 mm) wide
3/8" (9.53 mm) thick
nose 1/4" (6.35 mm) underside

SECTIONS NOT TO SCALE

DETAIL
Sure-hold anchor in concrete step

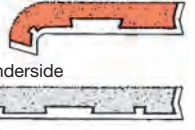
TYPE WP2C
2 1/16" (52.39 mm) wide
3/8" (9.53 mm) thick
nose 1/4" (6.35 mm) underside



TYPE WP4C
4 1/16" (103.19 mm) wide
3/8" (9.53 mm) thick
nose 1/4" (6.35 mm) underside

THESE SECTIONS AVAILABLE WITH COUNTERSUNK HOLES AND FASTENERS

TYPE WP2T
2" (52.39 mm) wide
3/8" (9.53 mm) thick
nose 1/4" (6.35 mm) underside



TYPE WP3T
3 1/16" (77.79 mm) wide, 3/8" (9.53 mm) thick,
nose 1/4" (6.35 mm) underside

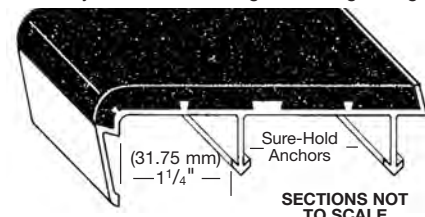


TYPE WP4T
4 1/16" (103.19 mm) wide, 3/8" (9.53 mm) thick
nose 1/4" (6.35 mm) underside

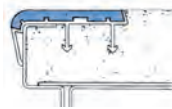
SPECTRA® PROFILES FOR STEEL PAN CONCRETE-FILLED STAIRS

MAXIMUM PIECE LENGTH IS 10 FEET

Generally installed full stringer to stringer length, less 1/8" clearance.



TYPE WP3SP
3 1/16" (77.79 mm) wide, 3/8" (9.53 mm) thick
nose 1 1/8" (28.58 mm) underside



DETAIL
Sure-hold anchor in steel pan step

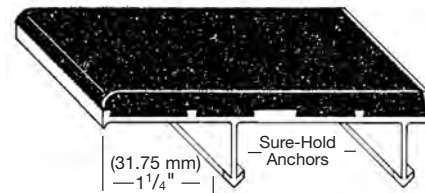
THESE SECTIONS AVAILABLE WITH COUNTERSUNK HOLES AND FASTENERS

TYPE WP2
2" (52.39 mm) wide
3/8" (9.53 mm) thick
nose 1 1/8" (28.58 mm) underside



TYPE WP3
3 1/16" (77.79 mm) wide
3/8" (9.53 mm) thick
nose 1 1/8" (28.58 mm) underside

SPECTRA® PROFILES FOR SLOPED RISER STEEL PAN STAIRS... MEETS OSHA BARRIER-FREE DESIGN, MAXIMUM PIECE LENGTH IS 10 FEET



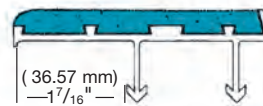
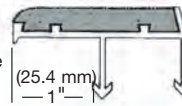
TYPE WP3J
3 1/16" (77.79 mm) wide
3/8" (9.53 mm) thick

NOTE: Nose design provides better fit at formed edge of steel pan.

SECTIONS NOT TO SCALE

DETAIL
Sure-hold anchor in steel pan step

TYPE WP2J
2 1/16" (52.39 mm) wide
3/8" (9.53 mm) thick



TYPE WP4J
4 1/16" (103.19 mm) wide
3/8" (9.53 mm) thick

THESE SECTIONS AVAILABLE WITH COUNTERSUNK HOLES AND FASTENERS

TYPE WP2JT
2 1/16" (52.39 mm) wide, 3/8" (9.53 mm) thick



TYPE WP3JT
3 1/16" (77.79 mm) wide, 3/8" (9.53 mm) thick



This series is designed to meet the OSHA requirements of the barrier-free code for stair construction.

MAXIMUM PIECE LENGTH IS 10 FEET

SPECTRA® RECESSED INTO STEP SURFACE

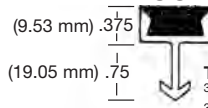


TYPE WP1
3/8" (9.53 mm) thick
3/4" (19.05 mm) wide



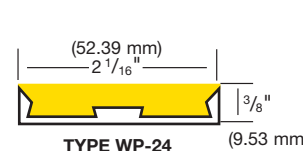
DETAIL
Recessed into concrete step

SPECTRA® FOR NEW CONCRETE

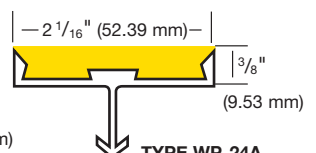


TYPE WP1A
3/8" (9.53 mm) thick
3/4" (19.05 mm) wide

CALIFORNIA TITLE 24 NOSINGS



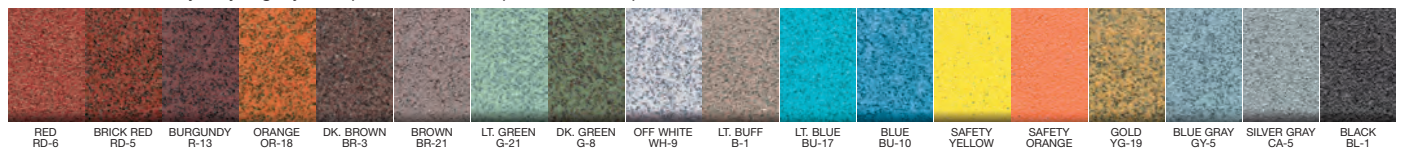
TYPE WP-24



TYPE WP-24A

SPECTRA® COLORS

Standard color is black. Black will be shipped unless another color is specified. See color chart below for other colors available. Actual tread color may vary slightly from printed sheet. Request tread sample if color is critical.





NITEGLOW®

Anti-Slip Glow-in-the-Dark Safety Treads

NITEGLOW®

- Illuminate dark egress paths
- Entire photoluminescent area is slip resistant
- Recharged by any light source, natural or artificial

SAFETY GUIDANCE SYSTEMS

Bring your building into compliance with the NYC, International Building and International Fire Codes. Section 1024 of the IBC and IFC codes call for Photoluminescent markings to be used in egress exit stairwells of buildings over 75 feet tall.

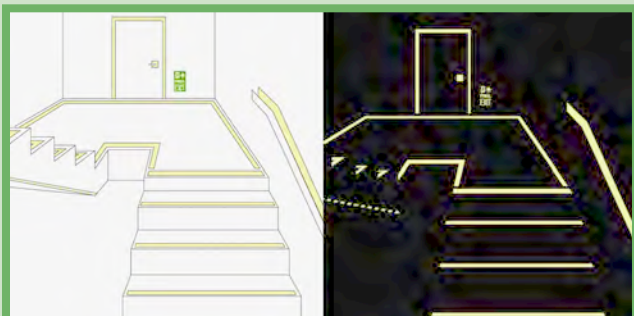
- **CODE 1024.2.1 STEPS** – continuous stripe on leading edges – utilize models 333-NG or 500-NG
- **CODE 1024.2.2 LANDINGS** – continuous stripe on the leading edge – utilize models 333-NG or 500-NG
- **CODE 1024.2.3 HANDRAILS AND EXTENSIONS** – Stripe on the top of handrails – utilize model 408.3
- **CODE 1024.2.4 PERIMETERS** – solid stripe on landings and other floor areas within exit enclosures. Either wall or floor mounted. Utilize model 408.3
- **CODE 1024.2.5 OBSTACLES** – obstacles projecting more than 4" or below 6'6" shall be marked with alternating bands of luminescent and black strips – utilize model 412.2
- **CODE 1024.2.6 DOORS FROM EXIT ENCLOSURES** – marked with a luminous exit symbol – utilize models 40.10 - 40.13 or 40.22 (consult factory for additional signs)
- **CODE 1024.2.6.2 DOOR HARDWARE** – shall be marked with no less than 16 square inches of luminous material – utilize models 40.21 or 408.3
- **CODE 1024.2.6.3 DOOR FRAME** – Top and sides of doors shall be marked with continuous luminous stripes – utilize models 408.3

- All NITEGLOW® nosings and treads meet current IBC and IFC codes. ASTM E 2072-74 and UL1994 •
- NYC MEA Approved, and in use, for over 10 years •
- NITEGLOW® pigment and anti-slip material is throughout product for maximum safety and durability•

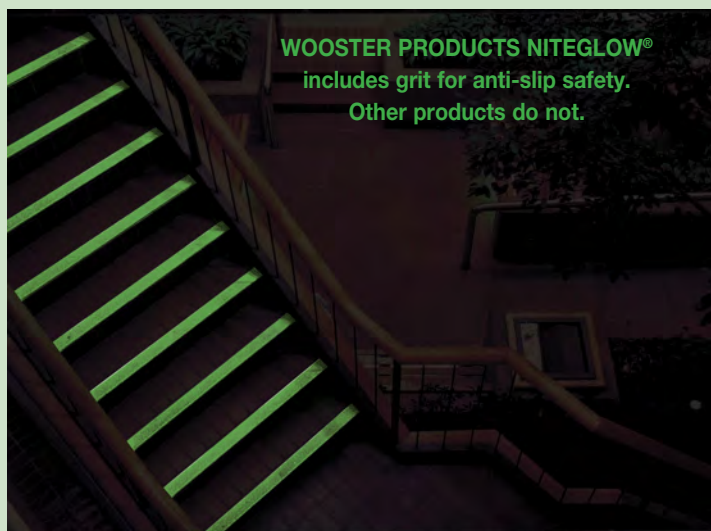
**IBC and IFC
COMPLIANT!
NYC MEA
APPROVED!**



**WORLD TRADE
CENTER SAFETY
TREAD OF CHOICE**

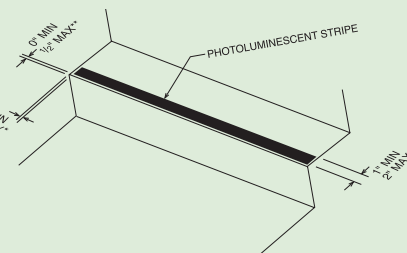


WOOSTER PRODUCTS NITEGLOW®
includes grit for anti-slip safety.
Other products do not.



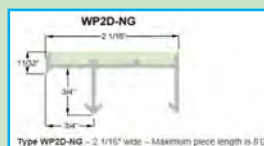
GUIDELINES FOR STEPS & LANDINGS PHOTOLUMINESCENT (GLOW-IN-THE-DARK) REQUIREMENTS.

- The entire horizontal leading edge of each step and landing shall be marked with a solid and continuous stripe of photoluminescent material. The dimensions, distances and locations shall be uniform throughout.

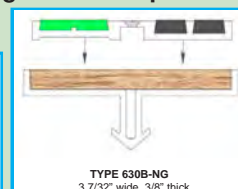


FEATURES

Our pigment is *embedded* in a hard epoxy mixture that meets all anti-slip and brightness codes. it is *not* a thin adhesive tape or coating with inadequate coefficient of friction ratings.



Type WP2D-NG – 2 1/8" wide – Maximum piece length is 6'0"



TYPE 630B-NG
3 7/32" wide, 3/8" thick

Glow in the dark treads are not designed to provide enough light to illuminate the dark egress path, but rather to provide luminescent outlines of the egress stairs.

NEW CONSTRUCTION

Wooster NITEGLOW® Products have been Tested and Approved for: Brightness rating: ISO 17398:2004; Washability: ASTM D 4828-1994 (2303); Toxicity Bombardier: SMP 800-C; Radioactivity: ASTM D 3648-2004; Flame Spread: ASTM D 635-2003



NITEGLOW®

Anti-Slip Glow-in-the-Dark Safety Treads

Maximum piece length of all NITEGLOW® stair treads and nosings is 8 feet

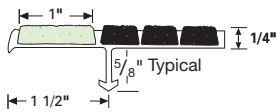
**IBC and IFC
COMPLIANT!
NYC MEA
APPROVED!**

COMPLETE SYSTEM TO BRING YOUR BUILDING UP TO IBC, IFC, AND NYC CODE COMPLIANCE.

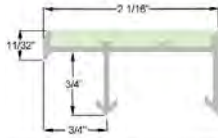
NITEGLOW® PHOTOLUMINESCENT STAIR NOSINGS & TREADS

M231BF-NG

3" wide



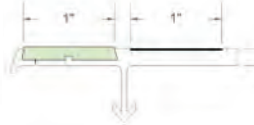
WP2D-NG



Type WP2D-NG - 2 1/16" wide - Maximum piece length is 8'0"

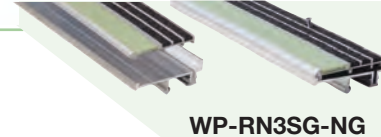
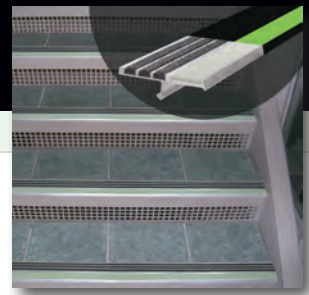
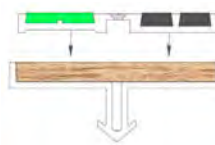
221BF-NG

2 1/2" wide



TYPE 630B-NG

3 7/32" wide, 3/8" thick

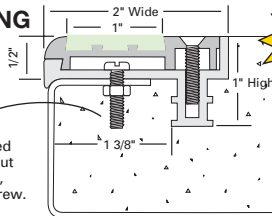


WP-RN3SG-NG

NITEGLOW® TWO STAGE STAIR NOSING WITH REPLACABLE WOOD INSERT FOR PROTECTION DURING CONSTRUCTION

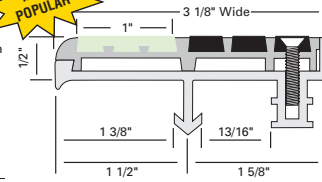
- Fast easy replacement if damaged
- Visual appearance and durability
- Secure anchorage
- Wood insert for construction phase
- Steel pan or poured concrete steps
- Indoor or outdoor use
- Non-combustible
- Heavy pedestrian traffic
- Maximum length 8 feet

WP-RN2-NG



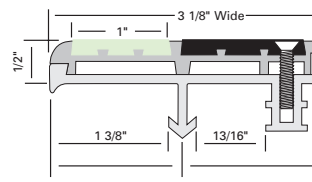
Fastener provided by others. Use nut & bolt (pictured), or self taping screw.

WP-RN3SG-NG



MOST POPULAR

WP-RN3SP-NG



Nosing insert installed after construction for fresh clean appearance.

Wood insert used during construction.



STAIRMASTER® 333-NG

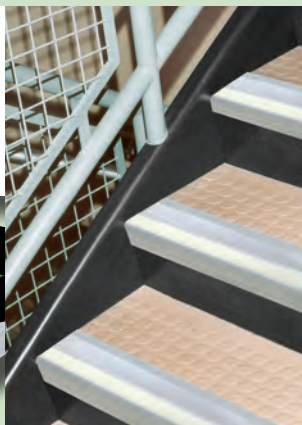
- Stairmaster® 333-NG high-quality lowest cost stair nosing. Easy to install utilizing construction adhesive and predrilled holes.

STAIRMASTER® 333FT-NG

3" Wide, NITEGLOW® is 1" wide



TYPE 333-NG with 1" wide strip of NITEGLOW®



STAIRMASTER® 500-NG

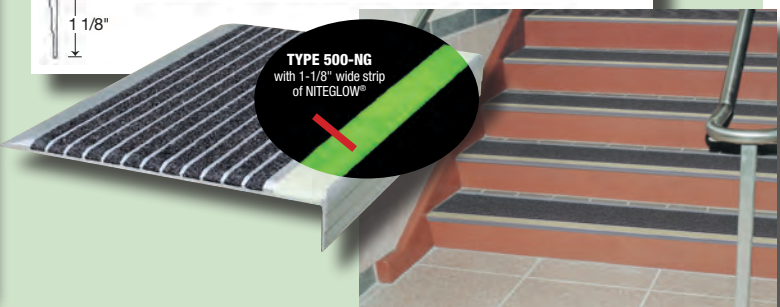
- Stairmaster 500-NG installed on stairways provides safety in two ways, prevents slips and falls and illuminates the front of the stairs for evacuation safety

STAIRMASTER® 500-NG

9" Wide, NITEGLOW® is 1-1/8" wide



TYPE 500-NG with 1-1/8" wide strip of NITEGLOW®



PHOTOLUMINESCENT SIGNS AND TAPES

Consult factory for complete photoluminescent egress packages.

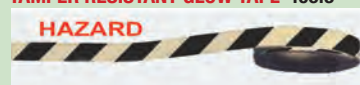
STANDARD GLOW TAPE 408.3

TAMPER RESISTANT GLOW TAPE 407.3



STANDARD GLOW TAPE 412.2

TAMPER RESISTANT GLOW TAPE 406.3



GLOW SIGN 40.22



GLOW SIGN 40.10



GLOW SIGN 40.14



GLOW SIGN 40.18

NOT AN EXIT

GLOW SIGN 8.66

NO RE-ENTRY

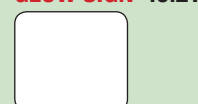
GLOW SIGN 40.12



GLOW SIGN 40.16



GLOW SIGN 40.21



25 Year Limited Warranty on Glow. Expect Service life GREATER than 50 years!

Specify Abrasive Castings For:

- Maximum Durability in Rough Use
- Indoor or Outdoor Use
- Resistance to Corrosive Environments
- Anti-Slip Safety Properties
- Ready to Install Convenience
- New Construction or Existing Buildings

TREADS, NOSINGS AND THRESHOLDS FOR PROTECTION AND LONG WEAR

ABRASIVE CASTINGS SPECIFICATION:

Provide Alumogrit® or Ferrogrit® type _____, size _____, safety treads/nosings as manufactured by Wooster Products Inc. for interior and exterior stairs.

- Abrasive shall be #20 virgin grain Aluminum Oxide (AL₂O₃) abrasive, integrally cast into the walking surface to a minimum depth of 1/32 inch (.79 mm).
- Safety nosings up to 6" (152.4 mm) deep with cross-hatched surface being installed into wet concrete shall have a "Marker Line" (Trademark 3571602) along the back edge.
- Concealed type anchors shall be slotted rivet type, integrally cast into the body of the nosing a minimum of 3/8 inch (9.53 mm). (Not mushroom type.)
- Cast metals used shall conform to the following specification:
- **Alumogrit®** (Abrasive cast aluminum): No. 43 prime and secondary ingot; low copper content; corrosion-resistant.
- **Ferrogrit®** (Abrasive cast iron): Class 20 iron; high silicon; machinable, hypereutectic.
- All holes or countersinks shall be machine-made. Screwheads shall not protrude above tread surface.
- All metal types shall have shot-blasted finish; Ferrogrit® treads and nosings to have one coat shop-black paint.
- Cross hatching and fluting shall be 1/16 inch (1.59 mm) deep minimum and shall be clean and well defined; treads and nosings shall be manufactured, packed and shipped so as to arrive at the jobsite in good condition.
- Nosings shall terminate not more than 4" (101.6 mm) from ends of steps for poured concrete stairs; for concrete-filled steel pan stairs, nosings shall be full length of steps, less 1/8" (3.05 mm) clearance.

Note: Safety nosings going into fresh poured concrete shall be installed before "Initial Set" of the concrete.

Non-structural stair nosings and treads for
Poured concrete and steel pan concrete-filled stairs

ALUMOGRIT®

5/16" and 3/8" thick - nosing width to 6" - max. length 8'6"
3/8" thick - over 6" to 12" width - max. length 6'

Types 101, 101SP, 100, 102, 110 and 120
5/16" thick - over 6" to 12" wide - max. length 6'

Types 103, 104, 116, 116A and 105A
5/16" thick - over 6" to 9" width - max. length 6'

FERROGRIT®

5/16" thick - nosing max. 6" wide - max. length 8'6"
3/8" thick - nosing width to 6" - max. length 8'6"
3/8" thick - over 6" to 12" wide - max. length 6'

ALUMOGRIT® NOSING



TYPE 116A - GREAT FOR EXISTING INDUSTRIAL STAIRWAYS AND/OR LANDINGS.

Wooster's quality cast treads, nosings and thresholds contain an even distribution of abrasive grit integrally cast into the surface for anti-slip protection and long wear. Width and length to order. Nosings that are set flush generally should be 3" (76.2 mm), 4" (101.6 mm) or 6" (152.4 mm) in width.

SURFACE: Abrasive cross-hatch is standard and will be furnished unless plain or fluted surface is specified. (Cross hatch pattern may not match up on sections being butted together.)

FASTENERS: 1/4" (6.35 mm) F.H.M. plated screws and nuts with steel wing anchors for fresh poured concrete or concealed integral anchors are available.

DRILLING: Standard drilling for nosings 3" (76.2 mm) in from ends and on approximate 12" (304.8 mm) centers in single, staggered or double row according to width. See page 14 for typical Anchor and Installation Details.

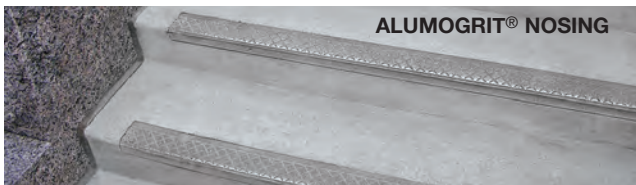
DO NOT predrill support structure before tread installation.

LENGTH: Up to 8'6" (2.59 m) in one piece for Alumogrit®. These maximum lengths do not apply to structural treads or platforms. Call Wooster Products for more details on maximum structural sizes.

GUIDELINES FOR THE INSTALLATION OF METAL SAFETY TREADS OR NOSINGS INTO NEW CONCRETE OR STEEL PAN-FILLED STAIRS:

- ... The use of very large aggregate in the concrete mix may make placement of the safety nosing difficult.
- ... Safety nosing placement may be difficult in concrete with very low slump.
- ... Place the concrete into the stair forms or steel pans as quickly as possible; schedule pours so as to install the metal safety nosings quickly, **before the "initial set"** of the concrete occurs.
- ... Puddle the concrete, tamp the safety nosings to insure proper concrete formation around the anchors.
- ... Remove the protective tape as soon as practical.

NOTE: Most nosings, stair treads and other anti-skid products are manufactured to order. Please contact Wooster Products Inc. for current lead time.
Close stairway after pour; permit no use for 24 hours.





ABRASIVE CAST Safety Treads & Nosings

Specify Abrasive Castings For:

- Maximum Durability in Rough Use
- Indoor or Outdoor Use
- Resistance to Corrosive Environments
- Anti-Slip Safety Properties
- Ready to Install Convenience
- New Construction or Existing Buildings

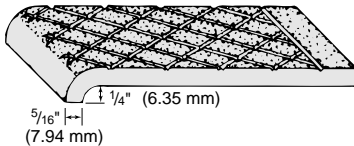
MEETS ADA REQUIREMENTS

Please call Grating Systems Inc for current availability.

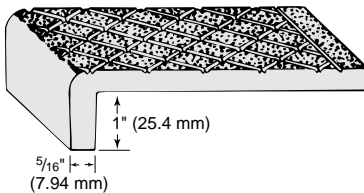
These sections available with concealed integral anchors, wing anchors, or countersunk holes (See page 14 for details).

Maximum Piece length is 8'6"

POURED CONCRETE

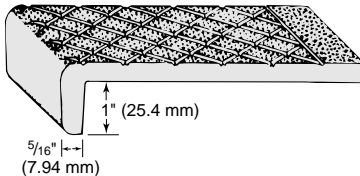


TYPE 101 – Nose $\frac{1}{4}$ " (6.35 mm) lip.
Chief use: as nosings, formed concrete stairs.
Tread installed flush all around.



TYPE 116 – Nose depth 1" (25.4 mm) standard.
Chief use: as nosings, formed concrete stairs
where deeper lip is desirable.

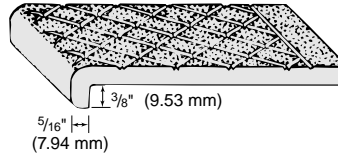
FOR EXISTING STAIR REPAIR



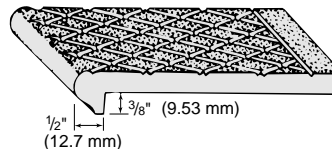
TYPE 116A – Nose depth 1" (25.4 mm) standard.
Chief use: on top of existing steps for repair and
modernization.

STEEL PAN

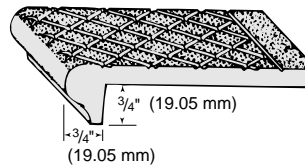
Generally installed full stringer to stringer
length, less $\frac{1}{8}$ " (3.05 mm) clearance.



TYPE 101SP – Nose $\frac{3}{8}$ " (9.53 mm).
Chief use: as nosings on steel-pan
concrete-filled stairs or on existing steps.

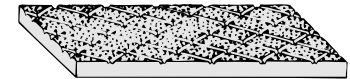


TYPE 102 – Nose $\frac{1}{2}$ " x $\frac{3}{8}$ " (12.7 mm x
9.53 mm). Chief use: as nosings on
steel-pan stairs. Can also be used
structurally with bent-plate risers.



TYPE 103 – Nose $\frac{3}{4}$ " x $\frac{3}{4}$ " (19.05 mm x
19.05 mm). Chief use: as structural treads
with bent-plate risers or as nosings full
width of stair.

MISCELLANEOUS USES



TYPE 100
Square edges. Chief uses: floor plates,
trench covers, stair landing platforms,
expansion joint covers.



TYPE 110
Rounded edges. Chief uses: Expansion
joint covers, platforms around
machinery, deck treads.



TYPE 120
One edge rounded. Chief use: nosings
on steel grating treads and for special
conditions, usually superimposed.



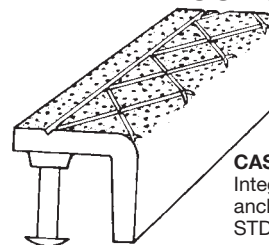
TYPE 950
Ladder Rung.
Alumogrit® 2"x18" piece size

CONCRETE CURBS

TYPE 150
 $1\frac{1}{2}$ " x $1\frac{1}{2}$ " x $\frac{3}{8}$ "
(38.1 mm x 38.1 mm x 9.53 mm)
Maximum length 6'0" (1.83 m)

TYPE 250
 $2\frac{1}{2}$ " x $2\frac{1}{2}$ " x $\frac{1}{2}$ "
(63.5 mm x 63.5 mm x 12.7 mm)
Maximum length 6'0" (1.83 m)
(Steel Anchor ONLY)

Consult factory when holes for
fastening are required.



CAST:
Integral
anchors
STD

NEW CONSTRUCTION

- Ferrogrit® is not recommended for corrosive environments.
- Ferrogrit® is not recommended for outdoor use due to possible rust appearance.
- Castings are subject to usual foundry draft, tolerances and thickness $\pm \frac{1}{16}$ ".
- Nosings may show a parting line on the nose surface.
- Standard measurements are from top of the leading edge.
- Custom lengths to $\pm \frac{1}{16}$ ".
- Standard hole size $\frac{1}{4}$ " with countersunk hole tops.
- Standard depths; 3", 4" and 6"
- Standard drilling; 3" from ends on approximately 12" centers.
- Beveled treads. Contact factory on availability per application.
- Lengths over maximum to be made in equal sections.





ABRASIVE CAST STRUCTURAL Ferrogrit® and Alumogrit® Treads, Platforms & Cast Thresholds

Specify Abrasive Castings For:

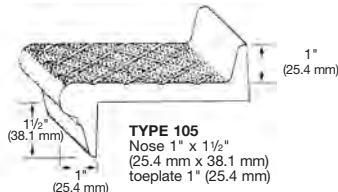
- Maximum Durability in Rough Use
- Indoor or Outdoor Use
- Resistance to Corrosive Environments
- New Construction or Existing Stairs
- Ready to Install Convenience
- Anti-Slip Safety Properties
- Extreme Field Conditions

TREADS, NOSINGS AND THRESHOLDS FOR PROTECTION AND LONG WEAR



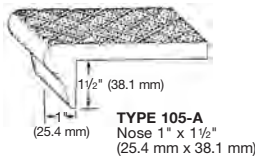
ALUMOGRIT®
STRUCTURAL TREADS

NOTE: Thicknesses are minimum for casting purposes and not always sufficient for structural strength. Where width exceeds 18" (457.2 mm), maximum piece length 6'0" (1.83 m). Where width exceeds 38" (965.2 mm), maximum piece length 5'0" (1.52 m). Color may vary from piece to piece for all metals. Cross-hatched, or flutes may not match when multiple sections are used.



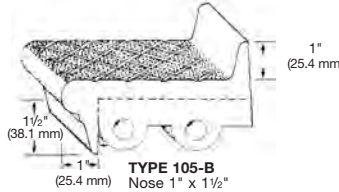
TYPE 105
Nose 1" x 1 1/2"
(25.4 mm x 38.1 mm)
toeplate 1" (25.4 mm)

Chief use: as structural treads. Nosing and toeplate can be drilled for attaching flat plate risers, when specified.



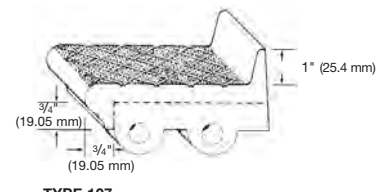
TYPE 105-A
Nose 1" x 1 1/2"
(25.4 mm x 38.1 mm)

Chief use: as structural treads or front of landing.



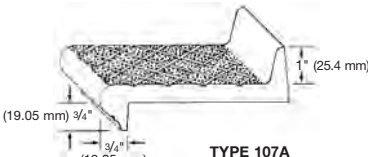
TYPE 105-B
Nose 1" x 1 1/2"
(25.4 mm x 38.1 mm)

Chief use: as structural treads. Nosing and toeplate can be drilled for attaching flat plate risers, when specified.



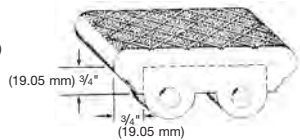
TYPE 107

Chief use: as structural treads. Nosing and toeplate can be drilled for attaching flat plate risers, when specified.

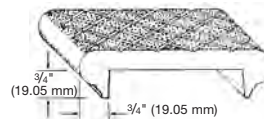


TYPE 107A
Nose 3/4" x 3/4"
(19.05 mm x 19.05 mm), toeplate 1" (25.4 mm).

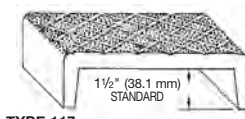
Structural tread fastened to carrier angles on stringers.



TYPE 106
Double nose tread, reversible. End lugs provided for bolting treads directly to stringers.



TYPE 106A
Double nose tread, reversible. Chief use: as structural tread supported by carrier angles on stringers.

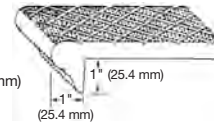


TYPE 117
Double nose tread, reversible. Chief use: as structural tread fastened to carrier angles on stringers.

TYPE 117A
Double nose, reversible. Chief use: marine and industrial ladders. Treads bolt directly to stringer.



TYPE 104
Nose 1" x 1"
(25.4 mm x 25.4 mm)



Chief use: as structural treads with bent-plate risers or superimposed on existing steps.

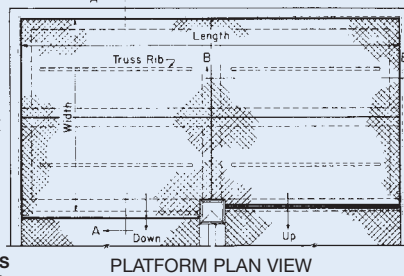
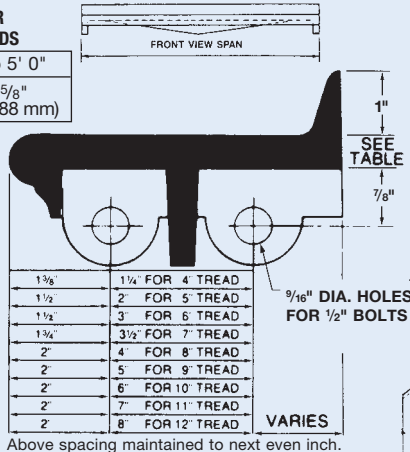
MINIMUM THICKNESS TABLE FOR DRILLING ON STRUCTURAL TREADS

SPAN	To 4' 0"	To 5' 0"
All Metals	1/2" (12.7 mm)	5/8" (15.88 mm)

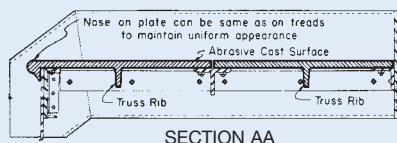
NOTE: Thicknesses are minimum for casting purposes and not always sufficient for structural strength.

STANDARD HOLE SPACING FOR TREADS WITH LUGS

Hole spacing for self-supporting treads. Maximum length 5'0". All treads are cast with truss ribs when required.



PLATFORM PLAN VIEW



SECTION AA

NOTE:

- Platforms manufactured in sections.
- Toeplates are added as required.
- Matching nosings are used on treads and platforms.
- Truss ribs are added when required for structural strength.
- Ferrogrit treads and platforms are furnished painted black; other metals have shotblasted finish.
- Standard surface furnished is abrasive cross hatched. Plain and fluted surfaces are also available.
- Supporting structural steel and fasteners are "by others".
- Various tread styles are available for attaching to carrier angles, or bolting directly to stair stringers.
- Sections are not "to scale".
- Attachment hole spacing for treads and platforms is "as detailed" for each job.
- Structural treads are custom made per application.
- Maximum structural tread length 5'0"

TYPE 105

Shown attached to carrier angles. Nose and toeplate have been drilled for closed riser plates. Types 103, 104, 105A, 105, 106A, 107A, and 117 can be drilled for attachment to carrier angles.

TYPE 117A

Shown with end lugs for mounting directly to stair stringer. No carrier angles are required. Types 105B, 106, 107, and 117A can be used this way.

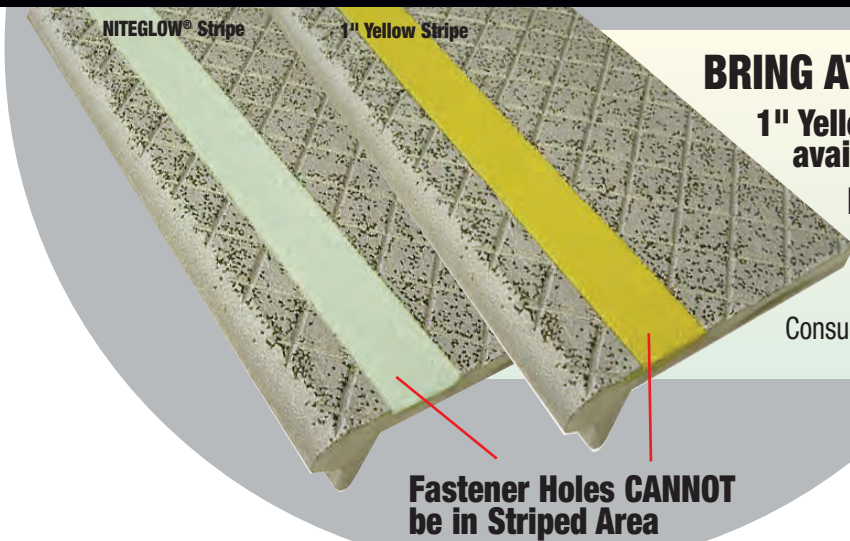


ABRASIVE CAST STRUCTURAL Ferrogrit® and Alumogrit® Treads, Platforms & Cast Thresholds

Specify Abrasive Castings For:

- Maximum Durability in Rough Use
- Indoor or Outdoor Use
- Resistance to Corrosive Environments
- New Construction or Existing Stairs
- Ready to Install Convenience
- Anti-Slip Safety Properties
- Extreme Field Conditions

MEETS ADA REQUIREMENTS



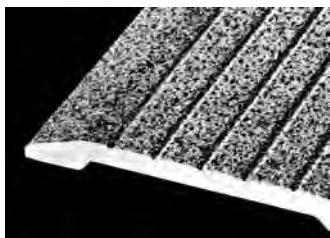
BRING ATTENTION TO EDGE OF THE STEP!

1" Yellow Stripe or NITEGLOW® Stripe available on nosing or treads.

Nosings or treads **MUST BE** at least 3/8" thick and at least 4" wide.

Available in Alumogrit ONLY!

Consult factory for stripe location and additional cost.



FLUTED SURFACED THRESHOLD

"Wooster" abrasive cast thresholds are cast to order from a large selection of architectural designs as shown. They are of highest quality and heavy duty construction in these metals:

ALUMOGRIT®: abrasive cast aluminum

FERROGRIT®: abrasive cast iron

FASTENERS: Thresholds are drilled and countersunk for 1/4" (6.35 mm) screws unless other fasteners are specified.

NOTCHING: Threshold ends can be factory notched for fast jobsite installation if frame details are furnished.

SPECIFICATIONS: See page 10 for casting specifications.

LENGTHS: Lengths to order up to 8' 6" (2.59 m) maximum in one piece.

SPECIAL PROFILES: Special shapes up to 18" (457.2 mm) are available if details are provided.

*Meets A.D.A. Requirements

SADDLE TYPES*



TYPE 110 - Widths and heights as required. Fluted, plain, or cross hatch surface 1/4" (9.53 mm) thick.



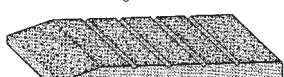
TYPE 111 - Standard 4" (101.6 mm), 5" (127 mm), 6" (152.4 mm) widths. Standard height 1/2" (12.7 mm), surface fluted. Other widths and heights to order.



TYPE 114 - Standard 4" (101.6 mm), 5" (127 mm), 6" (152.4 mm) widths. Standard height 1/4" (9.53 mm), surface fluted. Other widths and heights to order.



TYPE 115 - Standard 4" (101.6 mm), 5" (127 mm), 6" (152.4 mm) widths. Standard height 1/2" (12.7 mm). Other widths and heights to order. Fluted surface.



TYPE 115M - Standard 4" (101.6 mm), 5" (127 mm), 6" (152.4 mm) widths. Standard height 1/2" (12.7 mm). Other widths and heights to order. Fluted surface.

STOP TYPES

(50.8 mm for 101.6 mm, 12.7 mm widths)
2" for 4", 5" widths

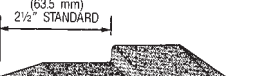
2 1/2" for 6" width
(63.5 mm for 152.4 mm width)



TYPE 112 - Standard 4" (101.6 mm), 5" (127 mm), 6" (152.4 mm) widths. Height under door 1/4" (16 mm). Other heights and intermediate dimensions to order. Plain surface.



TYPE 113 - Standard 4" (101.6 mm), 5" (127 mm), 6" (152.4 mm) widths. Height under door 1/4" (22.23 mm). Other heights and intermediate dimensions to order. Plain surface.



TYPE 115S - Standard 4" (101.6 mm), 5" (127 mm), 6" (152.4 mm) widths. Height under door 1/4" (12.7 mm). Other heights and intermediate dimensions to order. Plain surface.

HOOK STRIP TYPES

Styles of Hookstrip furnished with Types 109 and 119 thresholds. Specify style.

STYLE J

STYLE L



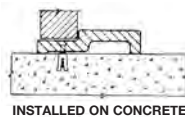
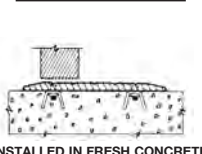
TYPE 109 - Standard 4" (101.6 mm), 5" (127 mm), 6" (152.4 mm) widths. Other widths to order. Made in 1/2" (12.7 mm). Other heights and intermediate dimensions to order. Fluted surface.



TYPE 119 - Standard 4" (101.6 mm), 5" (127 mm), 6" (152.4 mm) widths. Other widths to order. Made in 1/2" (16 mm), height only. Fluted surface. Hookstrip for door included.



TYPICAL INSTALLATIONS



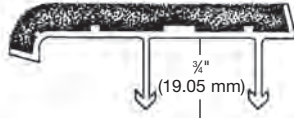
NEW CONSTRUCTION

* National Safety Council information

FRESH CONCRETE

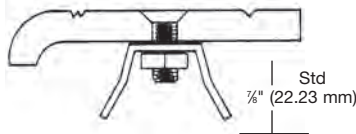
SURE-HOLD ANCHOR

Sure-Hold anchors run full length of tread for positive anchorage and quick installation. Since Sure-Hold anchors are concealed, no bolt holes appear on the tread surface. Available as shown on nosings.



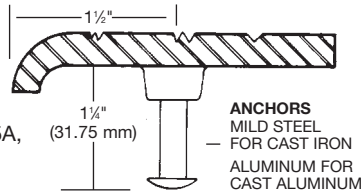
WING TYPE ANCHOR FOR CAST AND EXTRUDED NOSINGS

Steel wing anchors, bolts, and nuts are furnished for field attachment into factory-drilled and ctsk. holes, prior to tread installation. from ends on approx. 12" (304.8 mm) centers. In single, staggered or double row, according to tread width. Can be furnished on most types if specified. 3/4" length – FHMS. Wing metal, standard mild steel. Stainless steel upon request. Tapcon screws also available for cast nosings and treads



CONCEALED INTEGRAL ANCHOR

This concealed type anchor can be furnished on types 101, 101-SP, 116, 102, 103, 104, 105A, 100 but MUST BE SPECIFIED.



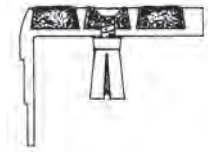
EXISTING CONSTRUCTION



WOOD OR MACHINE SCREWS



SILVER TAPCON SCREWS

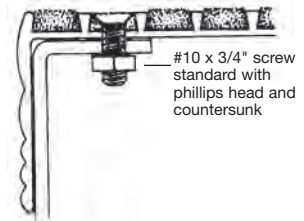


SCREW & SHIELDS

Treads being superimposed on existing stairs can be furnished pre-drilled and ctsk. for wood, machine or Tapcon screws. Standard spacing is 3" (76.2 mm) in from each end, approx. 12" (304.8 mm) centers, in single, staggered, or double row, according to tread width. Will furnish #10 screws.

BOLTED TO STEEL PAN RETURN

Nut and Bolt anchorage can be provided for new steel pan stairs. Pan return must be 1" (25.4 mm) minimum. Specify pan return depth for drilling purposes. Can be furnished on types WP-2, WP-RN2SG, WP-RN2SP, WP-RN2-NG, WP-3, WP-RN3SG, WP-RN3SP, WP-RN3SG-NG, WP-RN3SP-NG, 122, 132, 138, 142, 133, 162, 101-SP, 102, 103, but MUST BE SPECIFIED. Standard hole spacing is 3" (76.2 mm) from ends on approx. 12" (304.8 mm) centers.



AVAILABLE TO PURCHASE:

PROTECTIVE TAPE

Nosings for new construction can be furnished with protective tape. This tape should be removed soon after stairs are installed. Tape should not be left on treads longer than 30 days.

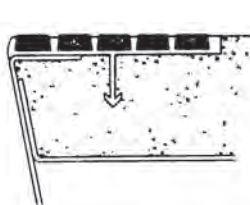
INSTALLATION TAPE

Two Sided Tape:

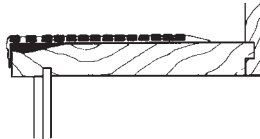
- Use as metals barrier in steel stair applications.
- Use to secure nosings to steel pans before pour.
- Use to install renovation treads indoors or outdoors.

Available in four sizes 3/4", 6", 8 1/2", 10 1/2"

INSTALLATION DETAILS



TYPE 231 BF
Sure-Hold anchor in sloped riser steel pan step.



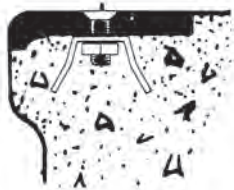
Type 500 Stairmaster® installed on wood step (wood screws available). If steps are other than wood, use screws with expansion shield or nut and bolt or Tapcon screws and an application of construction adhesive.



Type WP3C with integral Sure-Hold anchor in new concrete stair.



Type 133 Supergrit® with wing anchors in concrete filled steel pan.



Type 101 with wing type anchors in poured concrete stair.



Type 101SP with concealed integral anchor in steel pan stair.



Type 142 Supergrit® attached to wood tread and backed with tile, carpet, or other material.



STAIRMASTER® For Existing Stairs

**5-Year
Warranty**
on material and workmanship.

Specify Stairmaster® For:

- Heavy Pedestrian Traffic
- Indoor, Outdoor Installation
- Excellent Safety Protection at Low Cost
- For Existing Stairs
- Non-combustible

**MEETS A.D.A.
REQUIREMENTS**

SPECIFY

"STAIRMASTER®" FOR WORN AND SLIPPERY STAIRS

Stairmaster® Safety Treads are designed for the modernization and restoration of all types of stairs, while also providing excellent anti-slip protection.

Two-tone treads with contrasting color available.

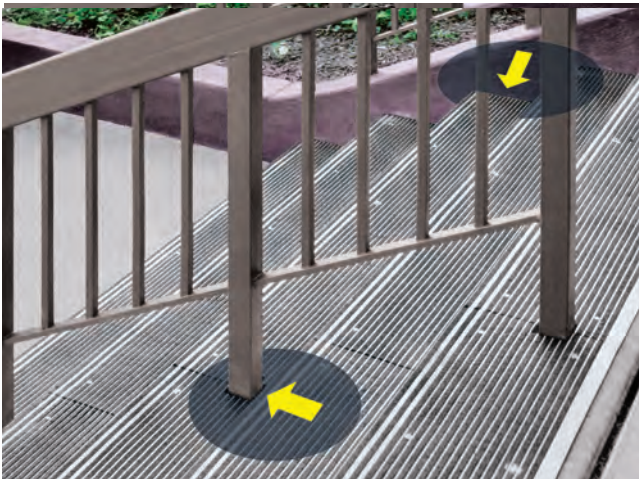
Stairmaster® Safety Treads provide a fast and economical alternative to removal and reconstruction of a stairway.

Wooster Products Leveling Compound is available to fill/level worn steps before installing Stairmaster® treads.

Use construction adhesive in addition to mechanical fasteners for the best installation results.

See page 3 for material specifications.

- Special tread sealer available for wood or saltwater applications.



STAIRMASTER® ON CONCRETE STAIR, CUT TO FIT AROUND THE POST & THE LENGTH OF THE STAIR WITH SQUARE ENDS.

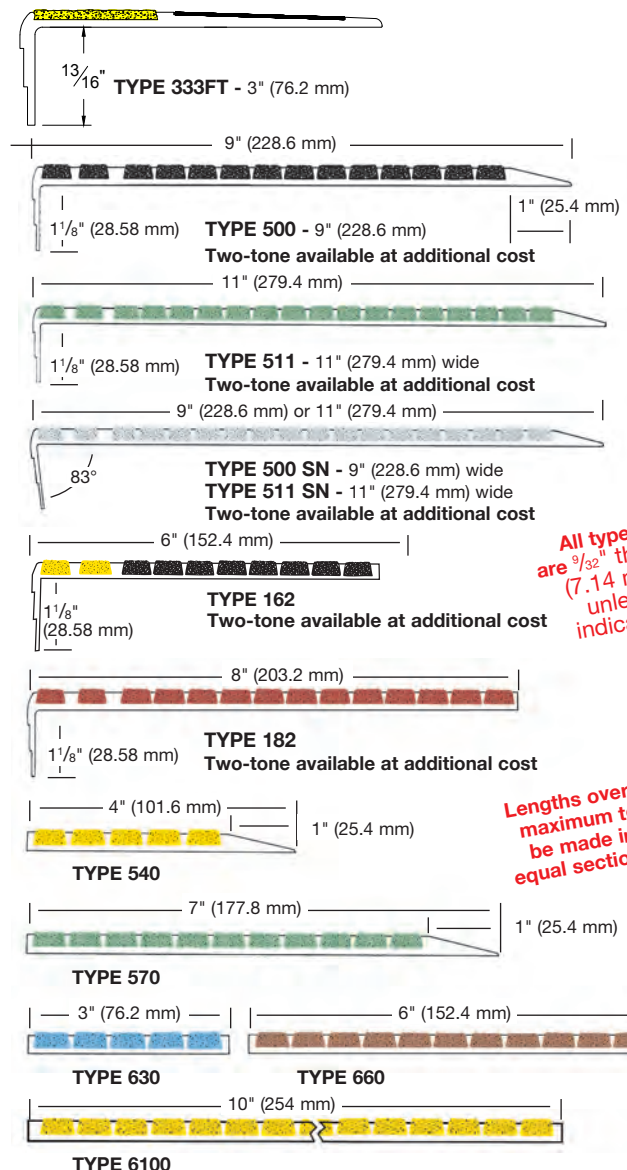


STAIRMASTER® ON WOOD STAIR, CUT SHORTER THAN THE LENGTH OF THE STAIR WITH BEVELED ENDS.

Most styles available up to 12'0" in one section. Maximum piece length on type 333, 6100, 511SN and 511 is 8'0". Drilled and countersunk holes are standard unless otherwise specified. Beveled ends, countersunk holes and tapcon screws are standard, unless specified.



Special twin visibility surfaces make the front edge more visible.





STAIRMASTER® Safety Existing Buildings Treads

Specify Stairmaster® For:

- Heavy Pedestrian Traffic
- Indoor, Outdoor Installation
- Excellent Safety Protection at Low Cost
- For Existing Stairs
- Non-combustible



“STAIRMASTER®” Coverage of Landings

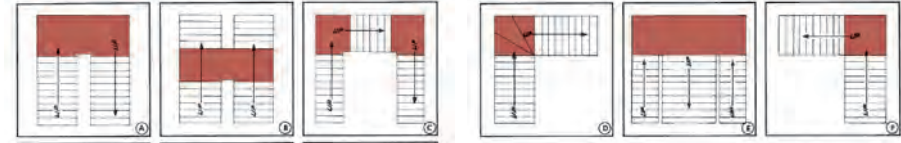
Full or partial coverage can be provided on landings.

Use treads below to cover depths greater than 11 inches. In addition to landings, treads can be used for applications like floors behind cafeteria counters, door sills, ramps, floor divisions, industrial platforms and in front of machines.

EXAMPLES OF TREAD TYPES USED TO COVER A LANDING



TYPES OF LANDINGS



AVAILABLE STAIRMASTER® COLORS

Standard color is black. Black will be shipped unless another color is specified. See color chart below for other colors available.



Actual tread color may vary slightly from printed sheet.
Request tread sample if color is critical.



LEVELING COMPOUND

Leveling Compound is supplied in 50-lb pails and consists of specially formulated components. Just add water, mix and compound is ready for troweling. It will not shrink as it dries and can be featheredged. One drum covers 50 square feet of surface in 1/8" thickness. Compound adheres to most surfaces; wood, concrete, steel, marble, etc. No primer required.

HEAVY DUTY CONSTRUCTION ADHESIVE

- 12 - 10.5 oz. cartridges per case
- VOC Compliant
- Use in addition to mechanical fasteners
- Coverage 70 lineal feet of tread per case, 5/16" bead



FLEXMASTER® SAFETY TREADS

- Inexpensive
- Easily replaceable
- Color coordinated surfaces available

- Title 24 applicable
- A.D.A. approved
- Durable safety surface

- NITEGLOW® available
- Indoor/outdoor use

3-Year Warranty

on material and workmanship.

FLEXMASTER® treads beautify and protect worn or slippery stairs.

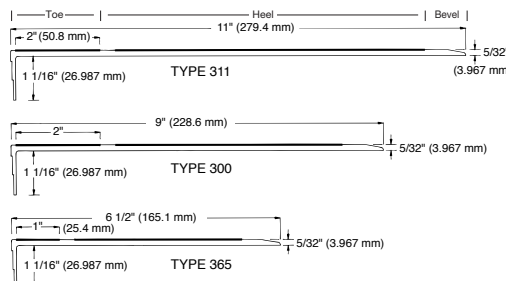
Sizes Available: • Type #365, 6-1/2" wide • Type #300, 9" wide • Type #311, 11" wide

- Treads are furnished drilled and countersunk unless otherwise specified.
- Specify construction adhesive for installation. • Maximum length = 12' 0"

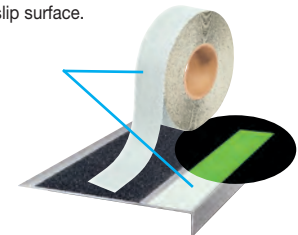
Flexmaster -this state of the art design is: inexpensive, easy to install, ADA approved, title 24 applicable, easily replaceable.

The tread base is made of Alloy 6063-T5 extruded aluminum, with a 5/32" thickness minimum. All exposed aluminum will have a satin-lacquered finish. Color extends uniformly throughout the abrasive surface; available in any Flex-Tred color.

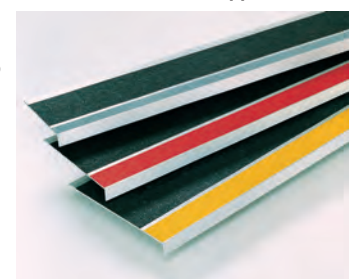
- Reduce Liability Claims
- Promote Pedestrian Safety
- Durable
- Meet OSHA & ADA Safety Regulations
- Reduce Lost-time Accidents Quickly
- Long Lasting



FLEXMASTER® is available with NITEGLOW® Glow-In-The-Dark anti-slip surface.



Not MEA or IBC Approved



No additional cost for two color.



FLEX-TRED®

Anti-Slip Safety Rolls, Cleats & Strips for Indoor or Outdoor Use

FLEX-TRED®

Flex-Tred® heavy-duty safety surface is quick to install and provides durable pedestrian safety on slippery surfaces. Uses: ramps, light traffic stairs, exercise equipment, industrial equipment, aisles, entrances, skateboards.

Flat black medium is a standard color and will be furnished unless another color is specified.

Black Textures: Sparkle Black, Ultragrip Black, Flat Black Extra Coarse, Flat Black Coarse, Flat Black Medium, Marine Black, Flat Black Fine, Super Fine Black.

General Note: Standard tolerance $\pm 1/16"$

STANDARD ROLL SIZES

3/4" x 60 ft. - packed	16 rolls per carton
1" x 60 ft. - packed	12 rolls per carton
2" x 60 ft. - packed	6 rolls per carton
3" x 60 ft. - packed	4 rolls per carton
4" x 60 ft. - packed	3 rolls per carton
6" x 60 ft. - packed	2 rolls per carton
8" x 60 ft. - packed	3 rolls per carton
12" x 60 ft. - packed	1 roll per carton
18" x 60 ft. - packed	1 roll per carton
24" x 60 ft. - packed	1 roll per carton

Custom Sizes On Request
Standard tolerance $\pm 1/16"$

STANDARD DIE-CUT SIZES

All standard sizes are packed 50 pieces each carton.

STRIPS AND CLEATS STANDARD CUT SIZES:

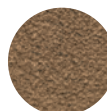


6" x 24"

Custom sizes for rolls and die cuts available by request.



5 1/2" x 5 1/2"



5 1/2" Dia.



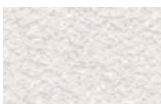
6'x9'
Arrow

MOP FRIENDLY MARINE & POOL COLORS

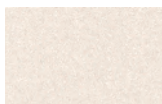
With a special design for bare feet, Flex-Tred®'s abrasive surface is adhesive backed, economical and easily installed. Special shapes available for OEMs. Ready for immediate use on pool decks, ramps, pleasure crafts, fishing docks, and boats. Order from our standard size rolls, standard die-cut sizes, or custom order your own die cut shape.



Teak Brown



Pebble White



Clear Fine

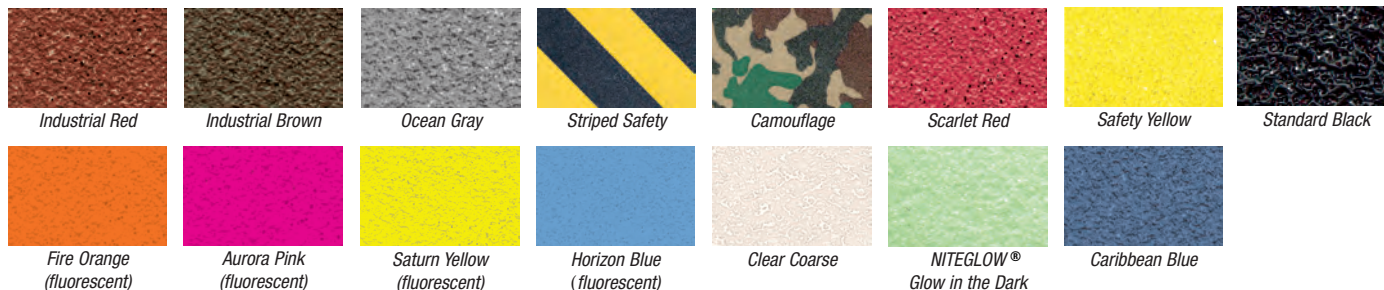


Marine Black

Use edge sealer for wet environments.

FLEX-TRED® COLOR CHART

Color coordinate with Flex-Tred® – key to decor – show contrast. Our variety of colors gives you a variety of options. Grades of coarseness, available only in black.



*Actual color may vary slightly from printed sheet. Request sample if color is critical.

* National Safety Council information

Wooster Products Floor Prep

Wooster Floor Prep is an effective alkaline compound recommended for cleaning all types of floor surfaces, prior to applying Flex-Tred®. Coverage: Each 4 oz. bottle will clean approximately 50 sq. ft.



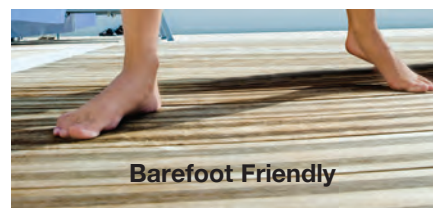
Wooster Products Clear Edge Sealer

Wooster Products clear edge sealing compound is used in applications where Flex-Tred exposure to liquids is expected. Fast drying (dries overnight) edge sealer sticks to most surfaces including metal, wood, rubber, plastics, concrete and fiberglass. Each 5 oz. tube covers approximately 100 lineal feet when applied as a 3/16" bead.



Seam Roller

Use on seams, edges, or uneven surfaces.





FLEX-TRED®

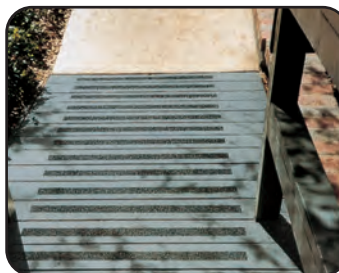
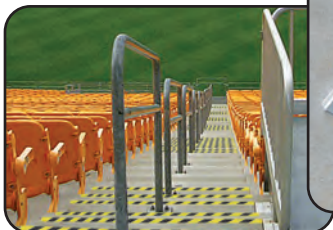
Anti-Slip Safety Rolls, Cleats & Strips for Indoor or Outdoor Use

APPLICATIONS

Anywhere You Need an Anti-Slip Surface

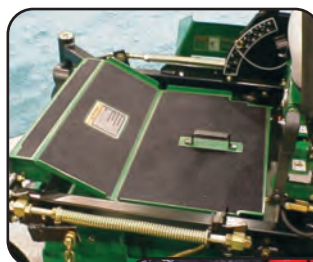
Walkways

- stairs • entrances • ramps • docks • pool areas • porches
- decks • balconies • ski-lift access areas • catwalks
- patios • galleys • etc.



Product

- recreational vehicles (campers, motor homes, trailers)
- exercise equipment • lawn and garden equipment
- lift trucks • ladders • trucks • construction equipment
- farm tractors and equipment
- playground equipment • skateboards • skis
- spas • utility vehicles • boats • aircraft
- baggage handling equipment • snowmobiles
- golf carts • bumpers • running boards • etc.



Workplace

- around work benches • laundries
- machinery work stations • kitchens
- platforms • scaffolds • cherry pickers
- boiler and furnace areas • etc.

FLEX-TRED® Improves Coefficient of Friction of Most Surfaces in Wet or Dry Use

Coefficient of friction tests run per specification Mil-D-17951C (ships) using rubber test vehicle. Higher numbers indicate better coefficient of friction.

COMPARISON OF VARIOUS SURFACES: STATIC COEFFICIENT OF FRICTION

	Dry Surface Test Results	Wet Surface Test Results		Dry Surface Test Results	Wet Surface Test Results
FLEX-TRED® Surfaces			Other Surfaces		
Flat Black Coarse	1.33	1.21	Ribbed Rubber	.89	.76
Sparkle Black	1.24	1.06	Scotch Tred	.69	.50
Blue Medium	1.29	1.09	Painted Steel	.77	.69
Flat Black Fine	1.37	1.17	Textured Vinyl	.80	.64
Ocean Grey	1.30	1.02	Ribbed Vinyl	.85	.72

Flex-Tred® meets or exceeds specifications for: Mil-D-17951E (ships); Motor Vehicle Safety Standard No. 302; Walkway Matting, Non-slip Mil-W-5044C, Type IV, ADA, ASTM and OSHA.

GENERAL PROPERTIES

- **Flexibility** - Flex-Tred® bends over sharp 90° angles without fracture. Repeated bending without cracking or failure of bond.
- **Temperature Limits** - Applied Flex-Tred® has a useful temperature range of -40°F to 220°F. However, limited exposure to temperatures above 220°F will not harm Flex-Tred®.
- **Steam Cleaning** - Applied Flex-Tred® will tolerate steam cleaning.
- **Detergent Cleaning** - Applied Flex-Tred® will tolerate detergent cleaning.
- **Environmental Resistance** - Flex-Tred® is essentially unaffected by climactic exposure and mild acid or alkali exposure under normal conditions.
- **Shelf Life** - Flex-Tred® shelf life is two years minimum.

BENEFITS

- **Anti-slip** wet or dry
- **Reduces liability exposure**
- **Quick & Easy to Install**
- **Economical**
- **Durable** - long wearing
- **Super Adhesion**
A heavy coating of specially formulated pressure-sensitive adhesive
- **Resistant to Solvents**
- **Die Cuts** available to fit your application.
- **Colors available**

WP Safety Coating Systems

PAINT

SAFE-STRIDE®

Moderate Traction and Durability for Foot Traffic

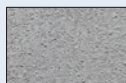
- Meet OSHA and ADA standards
- Meet ASTM slip resistance requirements.
- Indoor and Outdoor Applications • Custom Colors Available
- Coatings contain aluminum oxide or zirconium grit which give the coatings long-lasting added traction.

LOW VOC ACRYLIC

- Durable traction grit
- Adheres to concrete, wood, primed metal, asphalt, marble, and stone
- Easy application
- Easy clean-up
- Apply with brush or paint roller



Black



Gray



Safety Yellow

OIL BASE

- Durable traction grit
- Use preferred over acrylic for heavier traffic surfaces
- Easy application
- Apply with brush or paint roller



Gray



EPOXY COATINGS

WALK-A-SURED® & EPOXY WP-70®

VOC FREE WALK-A-SURED® High Traction and Durability for Vehicle and Foot Traffic LOW VOC EPOXY WP-70® Extreme Traction and Durability for Industrial Traffic

- Meet OSHA and ADA standards • Meet ASTM slip resistance requirements.
- Indoor and Outdoor Applications • Custom Colors Available
- Coatings contain aluminum oxide or zirconium grit which give the coatings long-lasting added traction.

WALK-A-SURED® WATER CLEAR EPOXY

- Chemical, solvent and water resistant
- Enhances traction on a variety of surfaces
- 100% solids - **NO VOCs!**
- 2-part Epoxy system
- Barefoot friendly available

New Features

- Specially formulated quick set system that will provide a clear, yet sure-footed and safe traction surface.
- Available in three formulas to meet the needs of any project.



Clear



WALK-A-SURED® ROLL-ON

- Chemical, solvent and water resistant
- Enhances traction on a variety of surfaces
- 100% solids - **NO VOCs!**
- 2-part Epoxy system

WALK-A-SURED®
VOC Free



Black



Gray



UV
RESISTANT

EPOXY WP-70®

NO FLASH OR VOLATILE SOLVENTS LOW VOC

TROWEL-ON

- 2-part Epoxy system for durable, long-lasting solution
- For industries such as breweries, canneries, off-shore drilling platforms
- Renews damaged ramps and floors in one coat.
- Extra thick consistency requires trowel or squeegee application



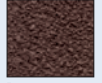
Black



Safety Yellow



Gray



Brown



WP COATINGS

Colors Available

Container Size

Storage Application

Approximate Coverage Sq. Ft.

Cure Time at 75° F

Method of Application

Application Temp.

Working Temp.

Pot Life Minute

Approximate Coefficient of Friction Dry

Approximate Coefficient of Friction Wet

Meets OSHA ADA & USDA Guidelines

PAINT COATINGS MODERATE TRACTION AND DURABILITY FOR FOOT TRAFFIC

LOW VOC SAFE-STRIDE® Acrylic

Black, Gray, Safety Yellow

1 Gallon

50" to 90"

100-125

2-4 hrs.

1/4" Nap Roller

50° to 90°

40°-110°

N/A

.97

.79

Yes

SAFE-STRIDE® Oil-Base

Gray

1 Gallon

50" to 90"

100-125

12 hrs.

1/4" Nap Roller

50° to 90°

20°-110°

N/A

.87

.83

Yes

EPOXY COATINGS : VOC FREE WALK-A-SURED® HIGH TRACTION AND DURABILITY FOR VEHICLE AND FOOT TRAFFIC LOW VOC EPOXY WP-70® EXTREME TRACTION AND DURABILITY FOR INDUSTRIAL TRAFFIC

VOC FREE WALK-A-SURED® Water Clear

Clear

1 Gallon

65" to 80"

150-275

8 hrs.

1/4" Nap Epoxy Roller

55° to 100°

20°-110°

25-35

.80-1.07

.76-1.02

Yes

VOC FREE WALK-A-SURED® Roll-On

Black, Gray

1 Gallon Kit

65" to 80"

125-175

18-24 hrs.

1/4" Nap Epoxy Roller

55° to 100°

20°-110°

30-60

.97

.80

Yes

LOW VOC EPOXY WP-70®

Black, Gray, Brown, Safety Yellow

1 Gallon Kit

65" to 80"

25-35

18-24 hrs.

Squeegee

55° to 100°

-40° to +180°

30-60

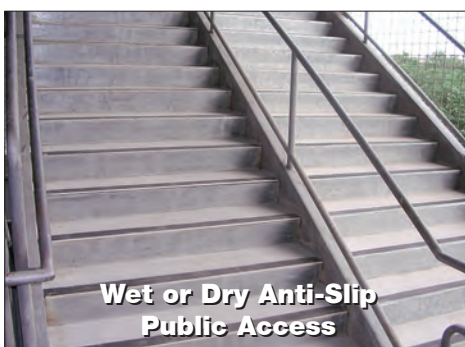
.92

.76

Yes

No extra hazardous shipping charges, with the exception of Safe-Stride® oil base. Epoxies and oil base Safe-Stride® cannot ship by air.

WP Anti-Slip Safety Stair and Walkway Products



© Copyright 2018 WOOSTER PRODUCTS INC

3005 S Scott Ln. | West Haven, UT 84401
800-368-4243 | sales@gratingsystems.com
www.gratingsystems.com

Printed in U.S.A.

Wooster Products Inc. reserves the right, without notice, to make changes in specifications, construction or design of any products at any time in such manner as we may consider necessary, or advisable, and to discontinue the manufacture and sale of any products.

IMPORTANT NOTICE TO PURCHASER: THE FOLLOWING IS MADE IN LIEU OF ALL WARRANTIES, EXPRESSED OR IMPLIED, INCLUDING WARRANTIES OF MERCHANTABILITY AND FITNESS FOR A PARTICULAR PURPOSE: Purchase or use of this product constitutes an agreement with Seller and Manufacturer that, if the product proves to be defective or in any way unsuitable, Seller's and Manufacturer's limit of liability for all damages, including but not limited to incidental or consequential damages, and User's or Purchaser's exclusive remedy, regardless of legal theory, including theories of breach of warranty, negligence and strict liability, shall be to receive, at Seller's or Manufacturer's option, repair of the defective product, an equivalent quantity of replacement product or a refund of the purchase price.